



PHOTOCARD PRINTER SETUP PROCEDURE

on SL620 & SL620 II

**Exclusively for
HID FargoDTC 1250e ONLY**

November 2018
Version 1.2

SUMMARY

SUMMARY.....	2
1.0 LICENSE AGREEMENTS, TERMS & CONDITIONS.....	3
2.0.PRE-REQUIREMENTS.....	4
3.0 SETUP PHOTOCARD PRINTER	5
3.1. INSTALLING THE CONSUMMABLES	5
3.2. CONNECTING THE PRINTER POWER	6
3.3. DRIVER INSTALLATION	7
3.4. ICC PROFILE INSTALLATION.....	10
3.5. DRIVER SETTINGS	14
4.0 PHOTO CARD PRINT	21
Photo card test print	21
Photo card print workflow	22
Frames Photo Cards print workflow.....	24
Themes Photo Cards print workflow.....	27
Adding Frame graphics to Photo Card product.....	31
Adding theme graphics to Photo Card product.....	33
Adding graphic for logo for Photo Card product.....	36
PSD file structure for Photo Card product.....	38
5.0 TROUBLESHOOTING.....	39
DNP PIE Support team contact details	39
Local immediate print product is no longer available.....	39

1.0 LICENSE AGREEMENTS, TERMS & CONDITIONS

Please refer the original user manual of Snap Lab Plus v1.8 for the following items:

- DS-Tmini Software Licensing Agreement
- Ownership Retained By Licensor
- Disclaimer of Warranties
- Limitation of Liability
- Governing Law
- Terms & Conditions
- Acknowledgments
- ICC Profiles

2.0 PRE REQUIREMENTS

The “Photo Card” feature allows you to print personalized plastic card selecting from various themes or by loading your own graphics.

This new product is only available with:



DS-Tmini

or

DT-T6mini

+

HID Fargo DTC 1250e

SL620 and SL620 II (Order terminal + DS620 printer) are also compatible with HID photo card printer.

Please contact your DNP reseller to purchase these products.

This new product is available only after these steps:

- Download and install the latest version of Snaplab + software (version 3.3.9 including Photocard) from DNP website : www.dnpphoto.eu
- Following the Fargo printer setup procedure (please see below)

3.0 SET UP THE PHOTO CARD PRINTER

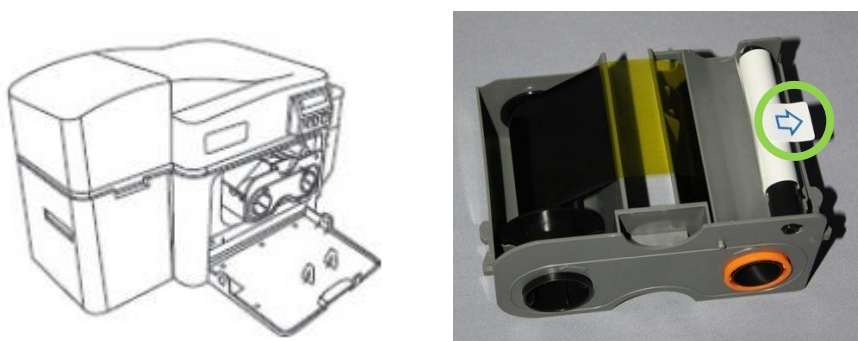
Installing the consummables

FARGO Direct-to-Card Printers require highly specialized supplies to function properly. The FARGO DTC1250e Card Printer uses a one piece, disposable ribbon cartridge system. To maximize printer durability, reliability and printed card quality, only FARGO-certified supplies must be used. For this reason, your FARGO warranty is void, where not prohibited by law, if you use non-FARGO-certified supplies.

Printer cleaning is recommended with each ribbon change to ensure quality printed cards.

Installing the Ribbon

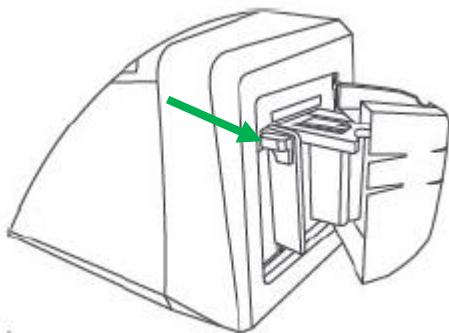
1. Pull open front cover.
2. Remove the protective paper on the sticker roll



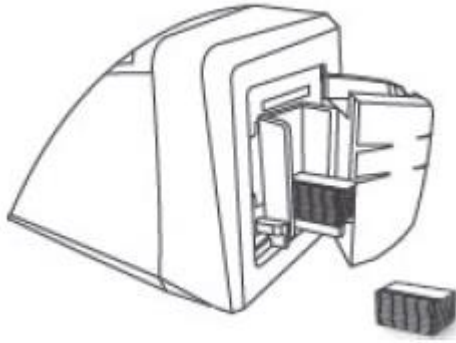
3. Insert the print ribbon cartridge into the printer.
4. Close the front cover.

Loading the cards

1. Open the input card hopper door.

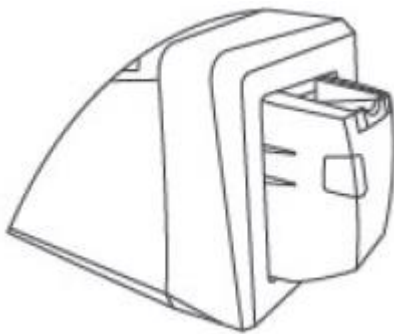


2. Press the card hopper load lever down until the card tray locks into place.



3. Load up to 100 cards into the hopper. (If using cards with a magnetic stripe*, the magnetic stripe should be loaded with the stripe up and to the front of the Printer.)

* Please note that the DTC Fargo 1250e is NOT an encoding printer



4. Close the input card hopper door to release the lever to the printing position.

Connecting the Printer Power

1. Plug the AC adapter power cable into the back of the printer.

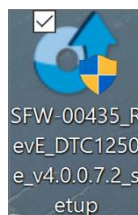


2. Plug the wall power cable into the AC power adapter.
3. Plug the wall power cable into a standard 100-240VAC power outlet.

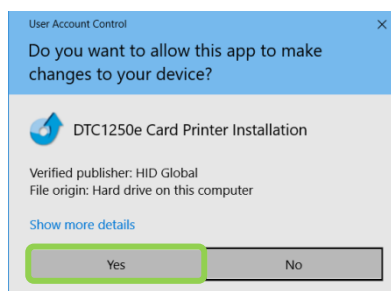
Note: Do not turn on the printer until prompted during the printer driver installation.

Driver installation

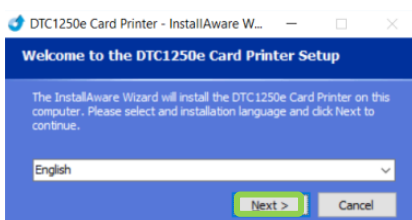
1. After downloading the latest Snaplab+ update (version 3.3.0.9), please unzip and copy the content to an empty USB key
2. On DSTmini/DTT6mini, Exit from Snaplab+ Software. (For the procedure, please contact your DNP reseller)
3. Connect your USB key to the rear side of your terminal.
4. Open the folder “DSTmini_DTT6mini_3.3.9_including_Photo_Card_Product” on your USB key
5. Open the folder “FARGO_DTC1250e_Driver” and access to the installer :
SFW-00435_RevE_DTC1250e_v4.0.0.7.2_setup



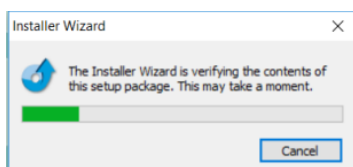
6. A popup window will appear “Do you want to allow this app to make changes to your device?”
Click on yes



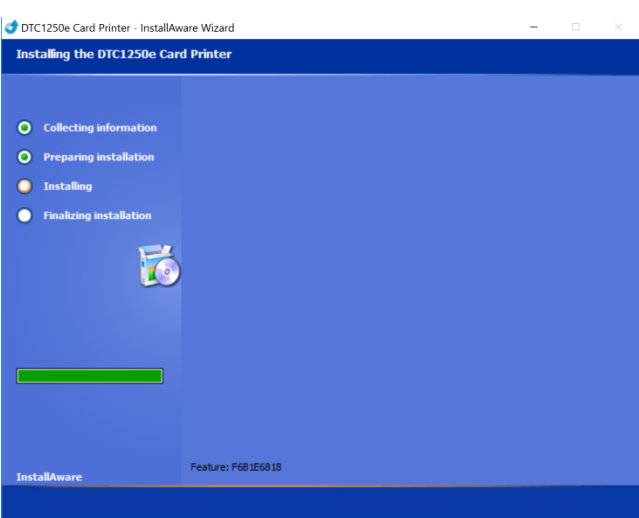
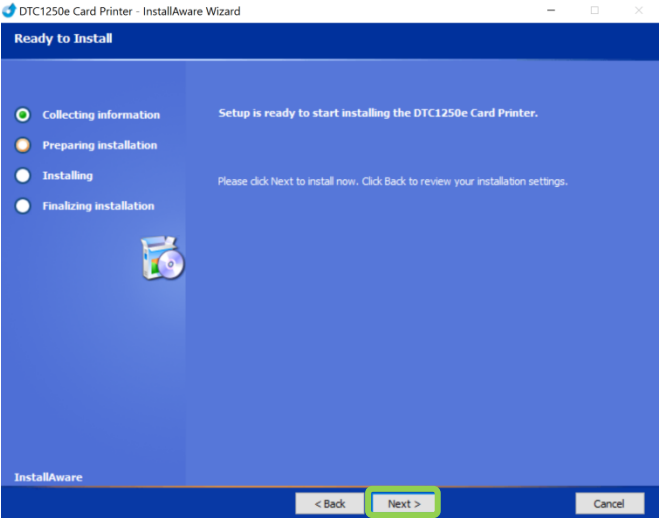
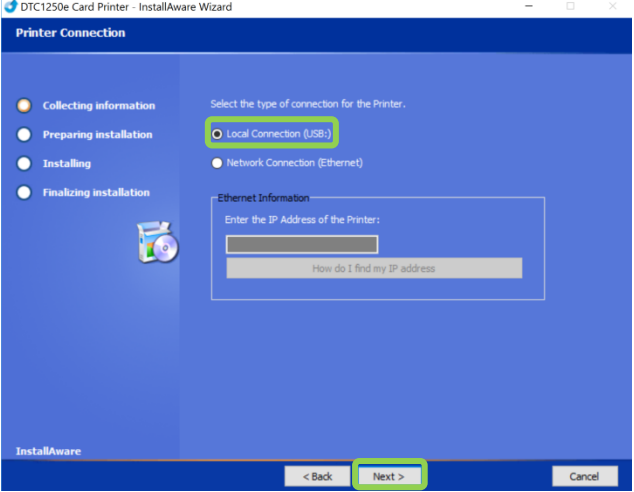
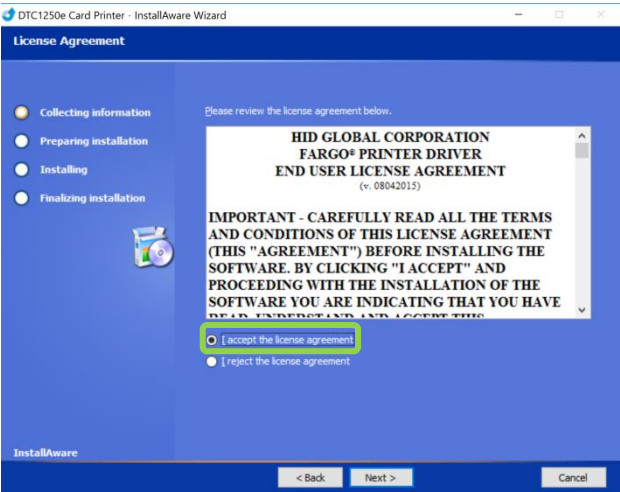
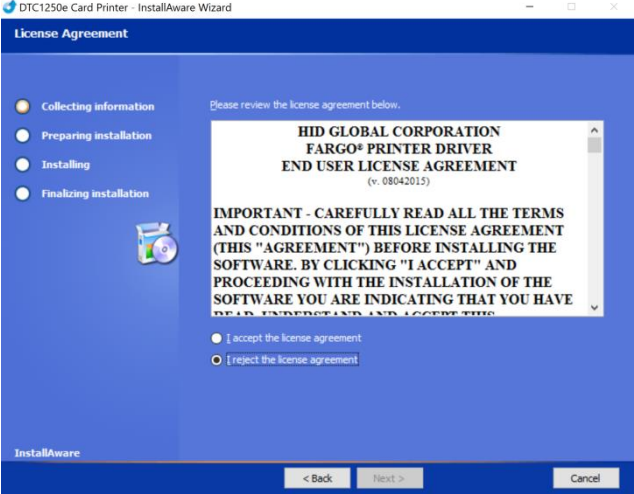
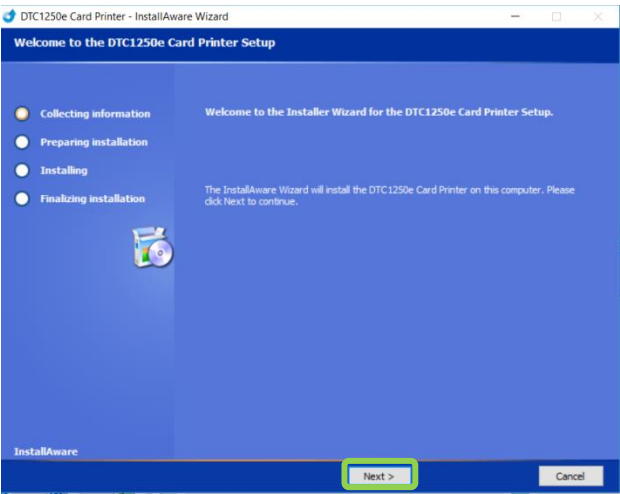
7. Select the language of the driver



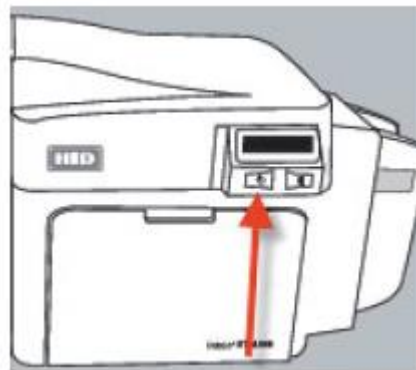
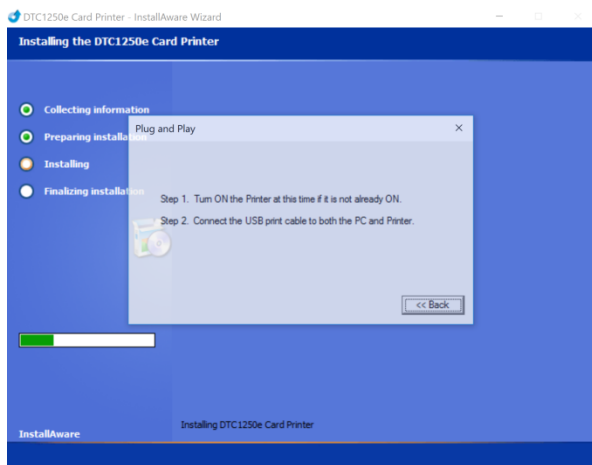
8. A window will appear informing you that the Installer Wizard is verifying the contents of this setup package. Please wait.



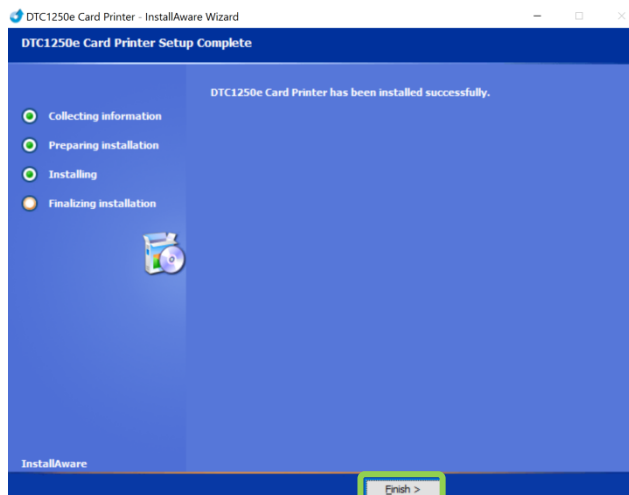
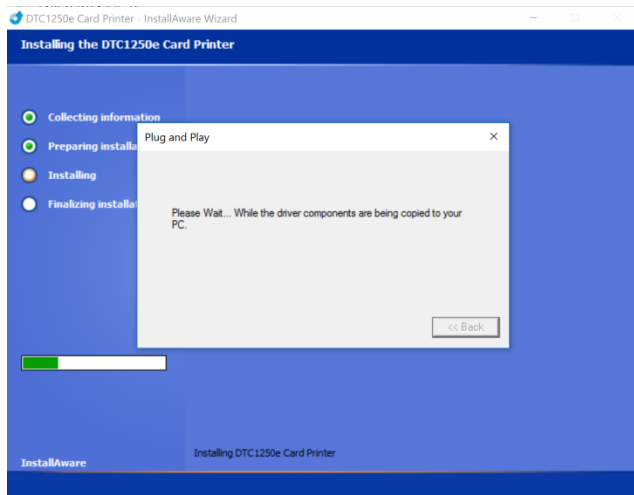
9. Please follow these steps on the InstallAware Wizard window:



10. At this stage, please turn ON the Fargo printer and connect it to your DS-Tmini/DT-T6mini



WARNING: Please always use the same USB port on your DS-Tmini/DT-T6mini terminal to connect your Fargo printer.



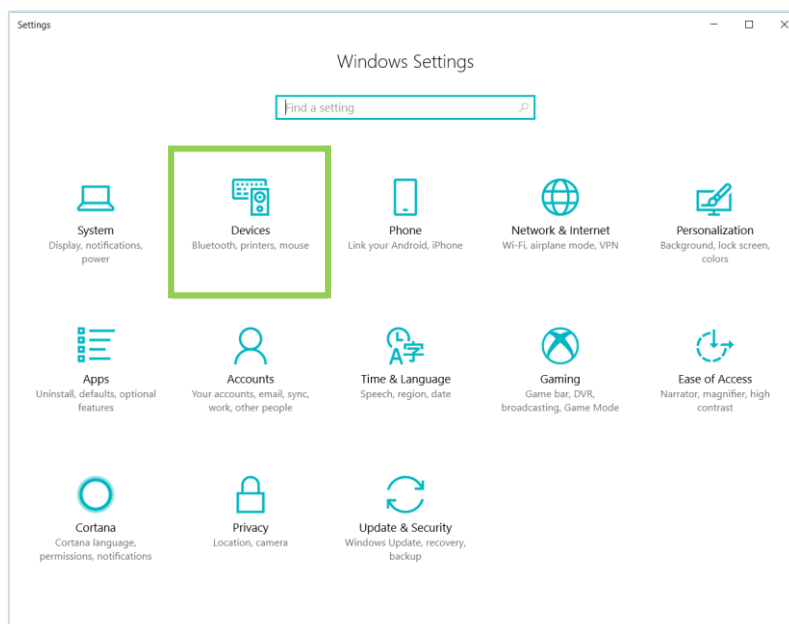
11. Click on the Finish button to come back on the Desktop. At this stage, for optimal printing quality we **highly recommend** to configure the image color parameters in the printer driver. Please follow the steps on the next page.

ICC profile installation

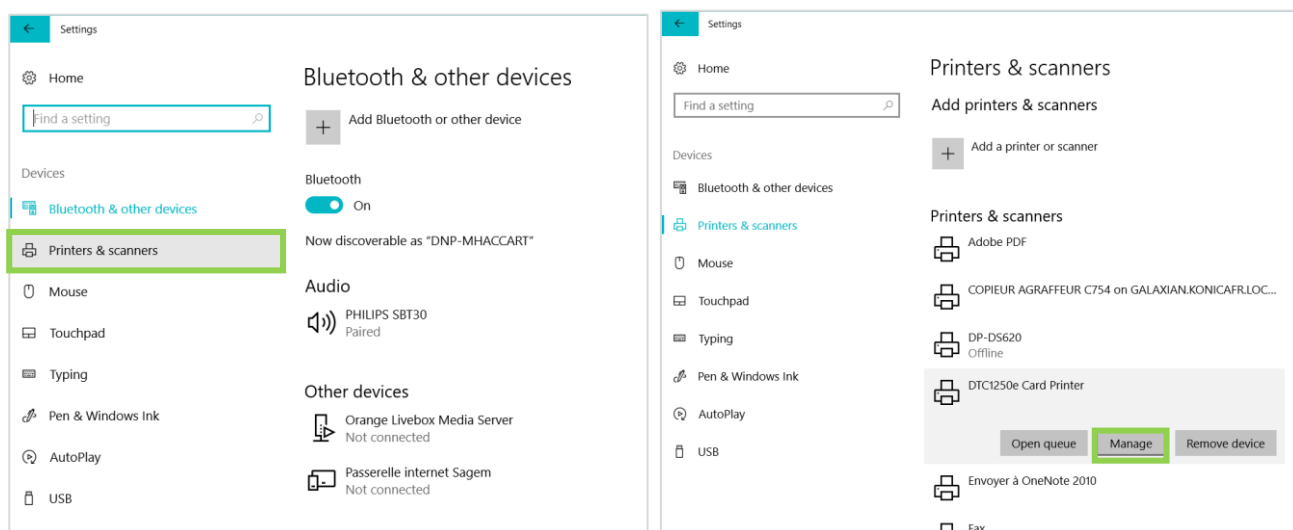
Note: For easier configuration, we invite you to use a mouse connected via USB to the rear side of the DST-Mini/DT-T6mini.

In order to install the ICC profile of the Fargo printer, you will have to use the file « DTC1250eCLR_PIE.ICM » which you can find in the folder that you downloaded on the DNP website
« DSTmini_DTT6mini_3.3.9_including_Photo_Card_Product ».

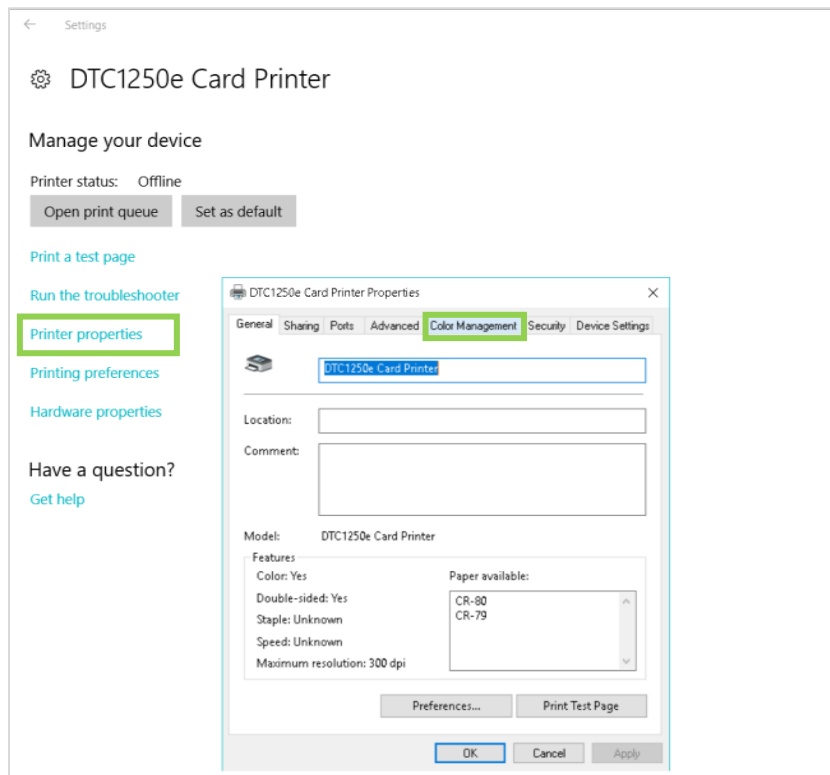
1. Under Windows, go to the Panel « Windows settings», click on « Devices », then « Printers and scans »



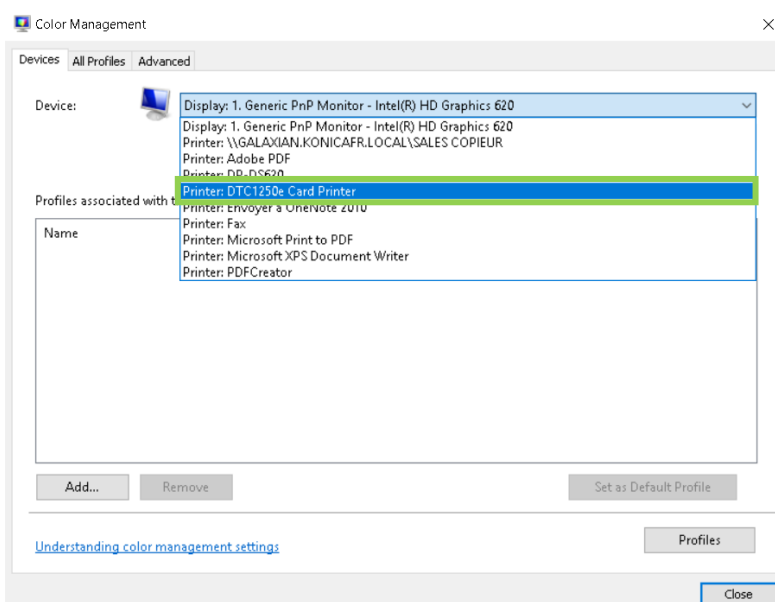
2. Select « DTC1250e Card Printer » and click on “Manage”



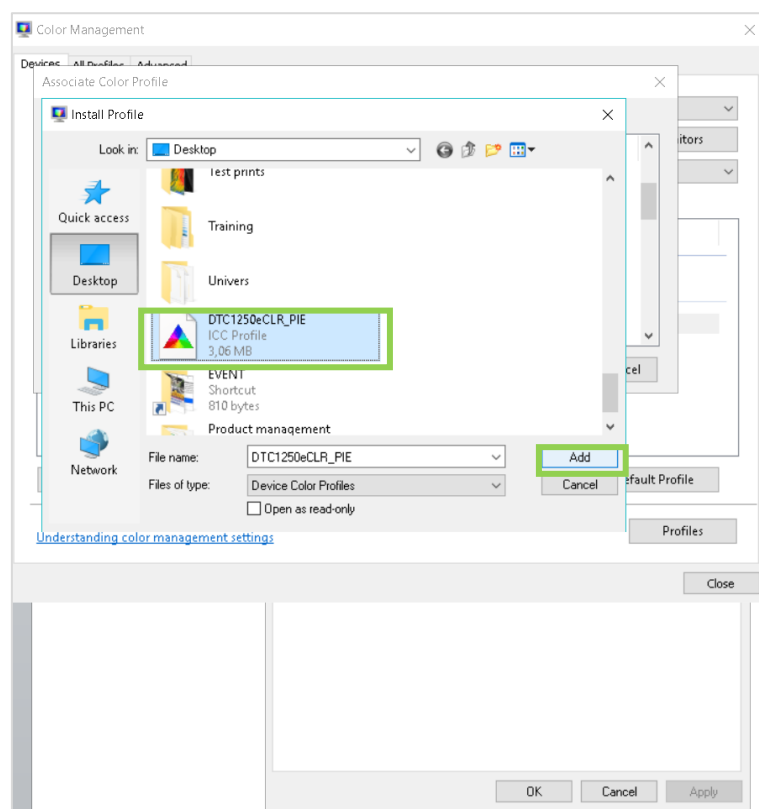
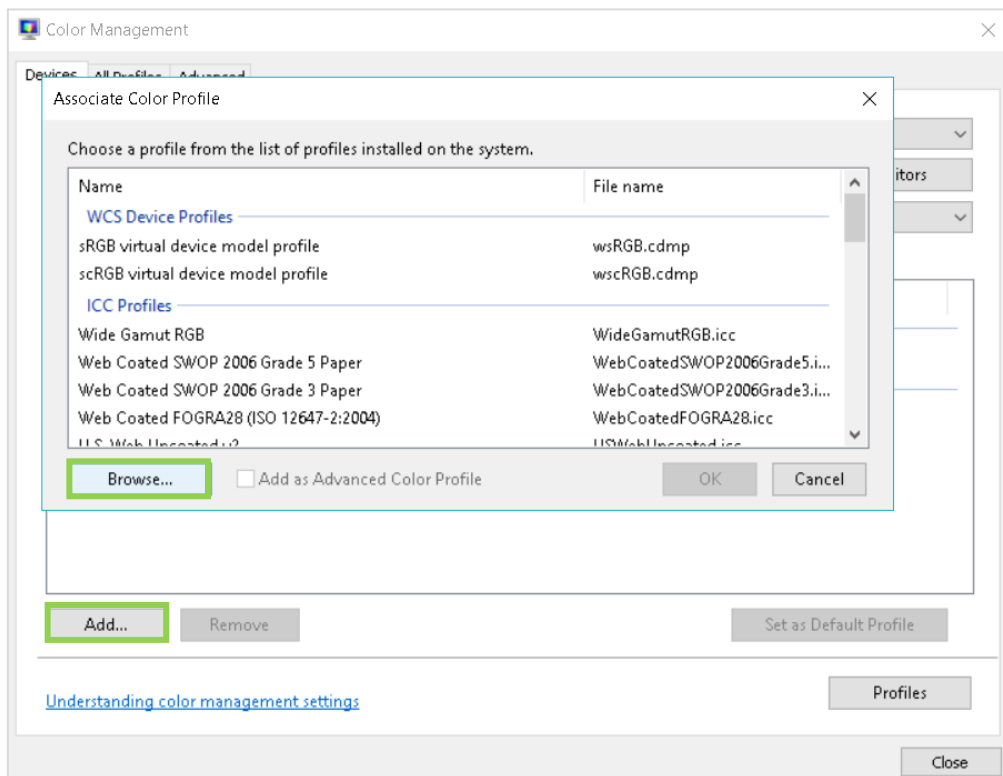
- Click on “Printer properties” and go to the tab « Color Management », then click on « Color Management »



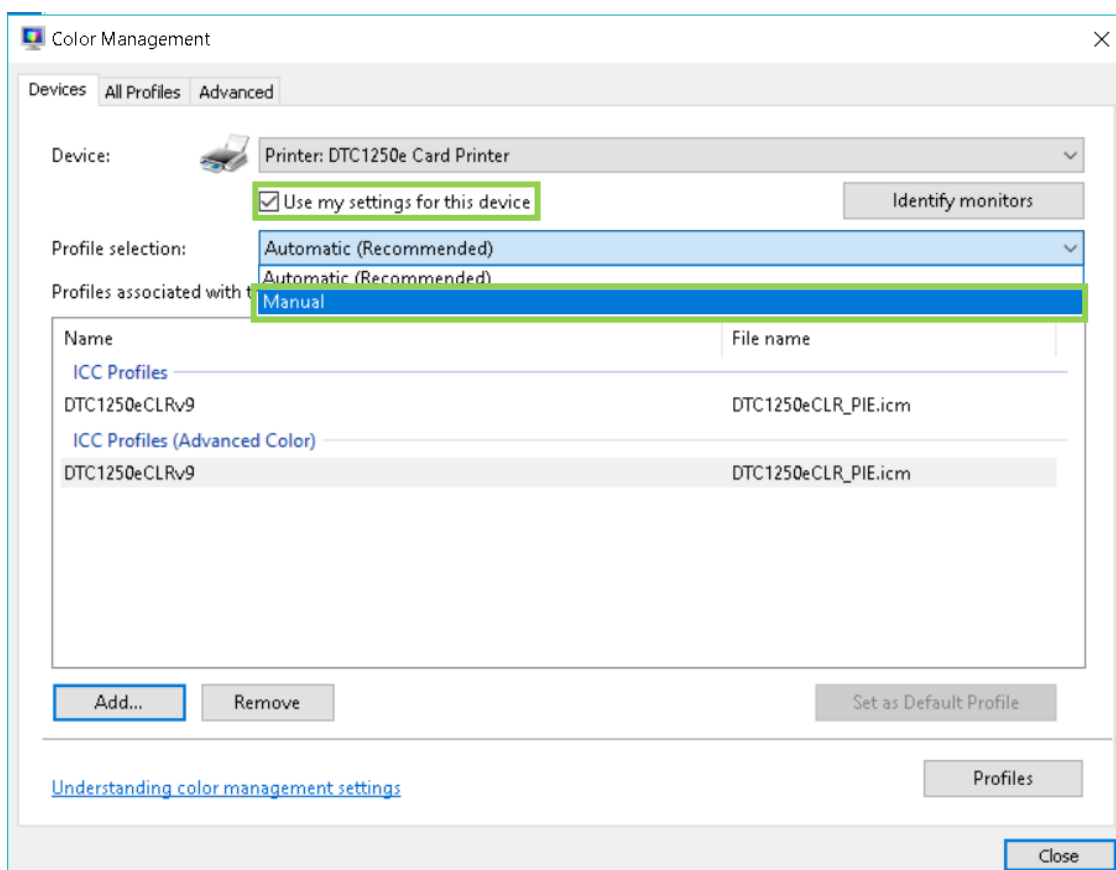
- In “Device”, select the printer **DTC1250e Card Printer** from the list



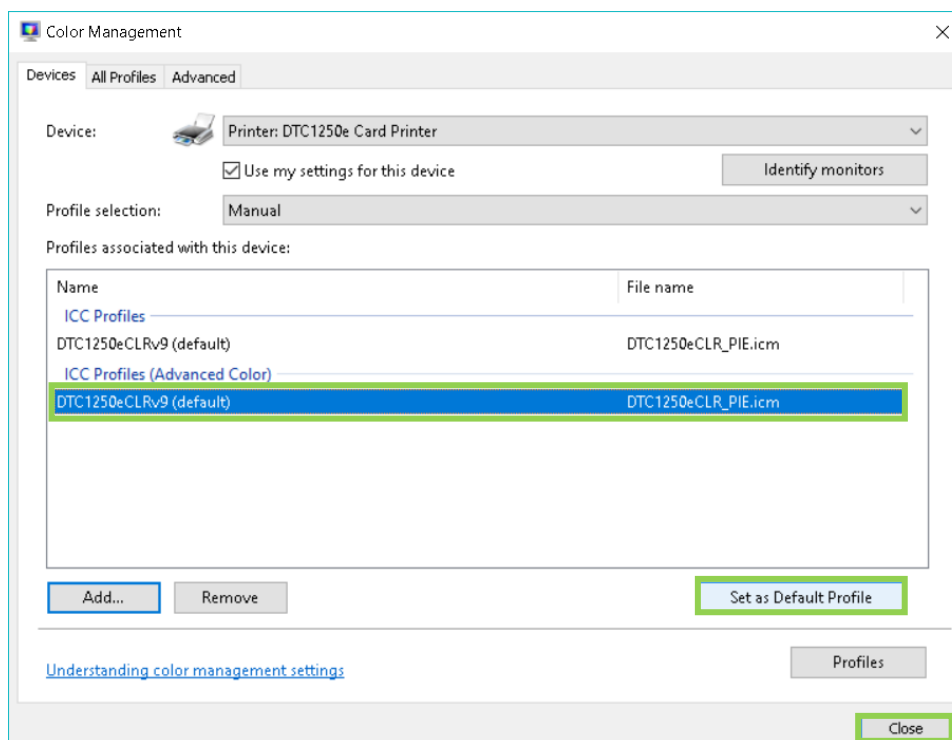
- Click on « Add... », then « Browse... » to get the ICC file « DTC1250eCLR_PIE.ICM » (which is in the folder « DSTmini_DTT6mini_3.3.9_including_Photo_Card_Product »).Once the file is selected, click on “Add” again.



6. Tick the box « *Use my settings for this device* », then select « *Manual* » in « *Profile Selection* »



7. Select the ICC file in *ICC Profiles* and click on « *Set as Default Profile* »



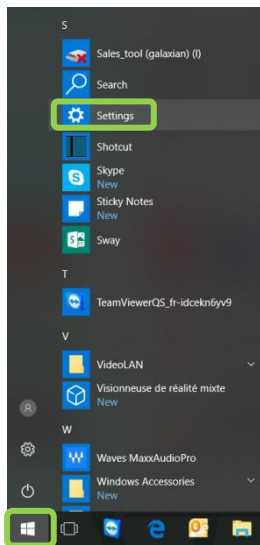
The enhanced ICC profile is now installed. You can close the window.

Driver settings

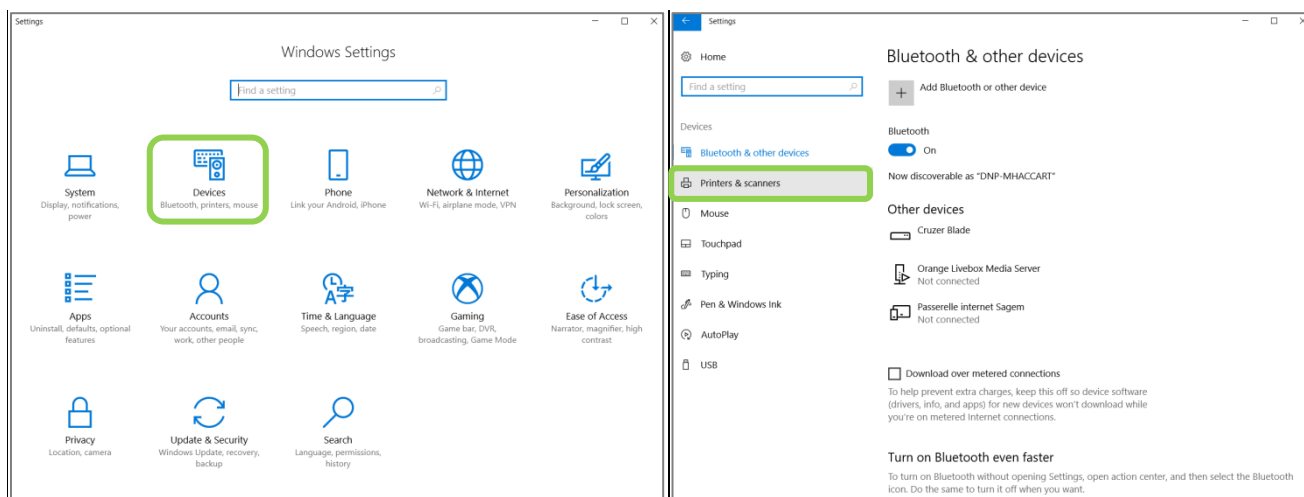
Note: For easier configuration, we invite you to use a mouse connected via USB to the rear side of the DST-Mini/DT-T6mini.

WINDOWS 10 (FOR DT-T6MINI AND DS-TMINI)

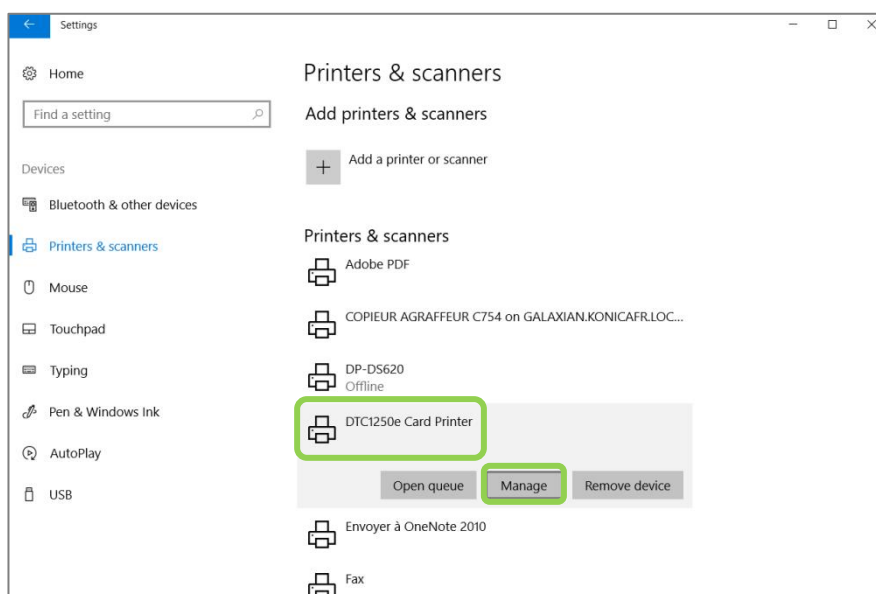
1. Click on the Windows button on the bottom left of your screen and go to “Settings”.



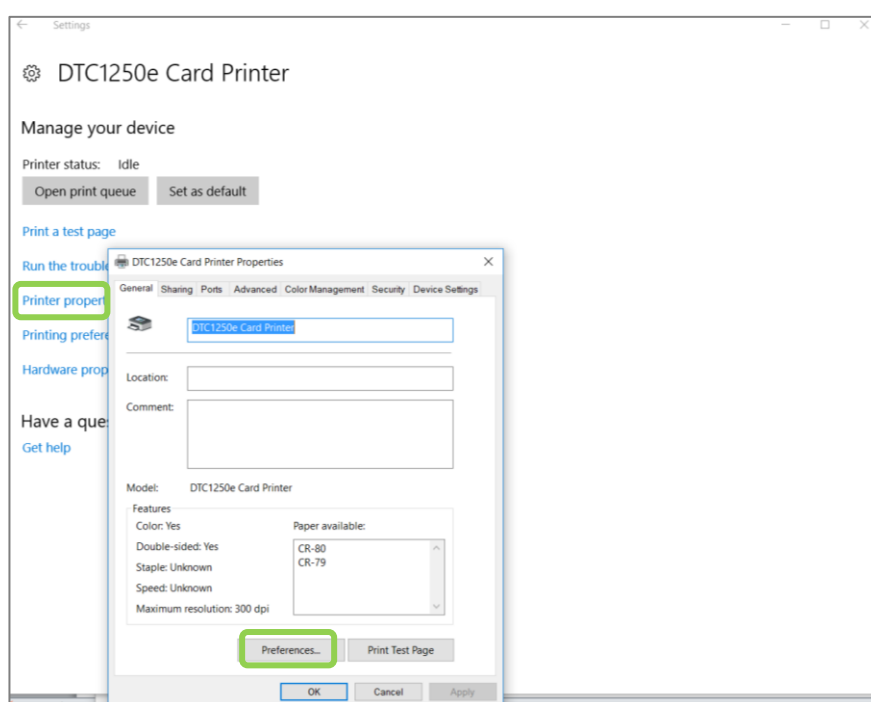
2. Click on “Devices” and “Printers & Scanners”.



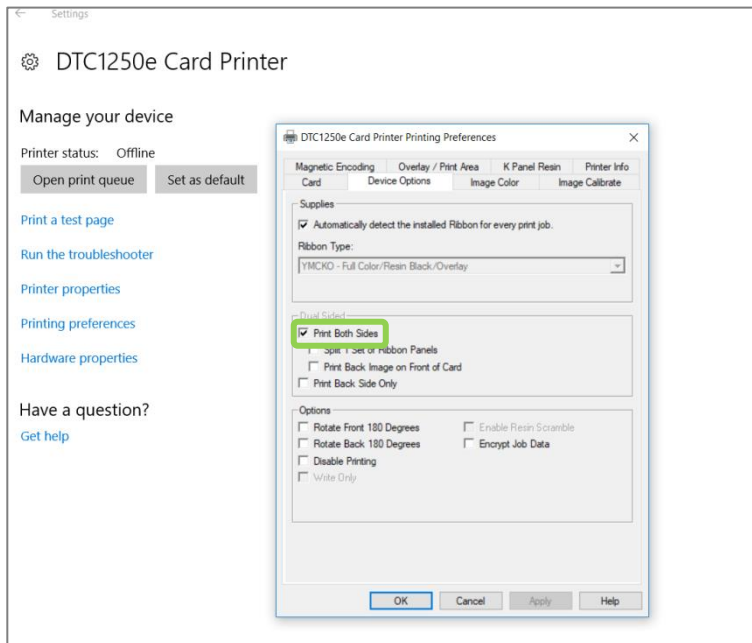
- Click right on the DTC1250e Card Printer and click on “Manage” button



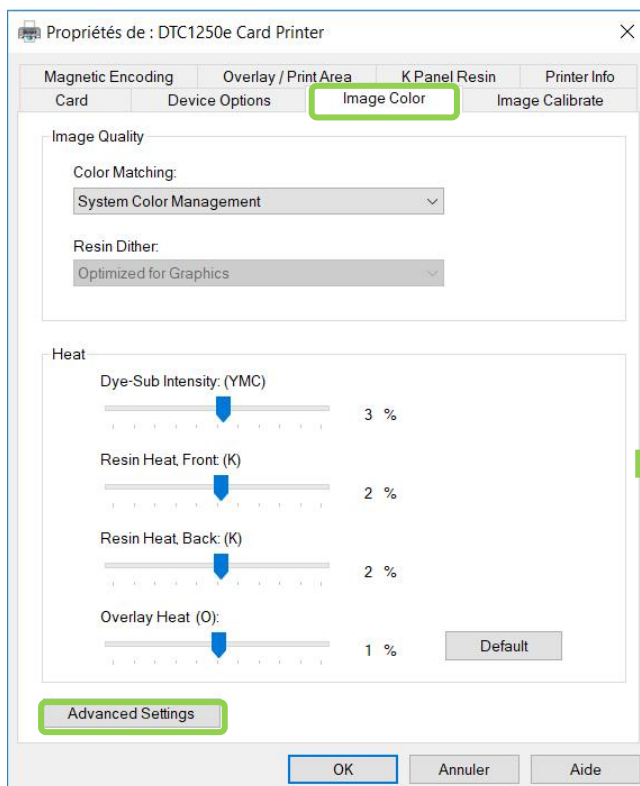
- Click on Printer properties and click on “Preferences...” button



5. Go to “Device Options” tab, and tick the “Print both sides” box
(**Note:** if a window pops up at this step, click on “OK”)



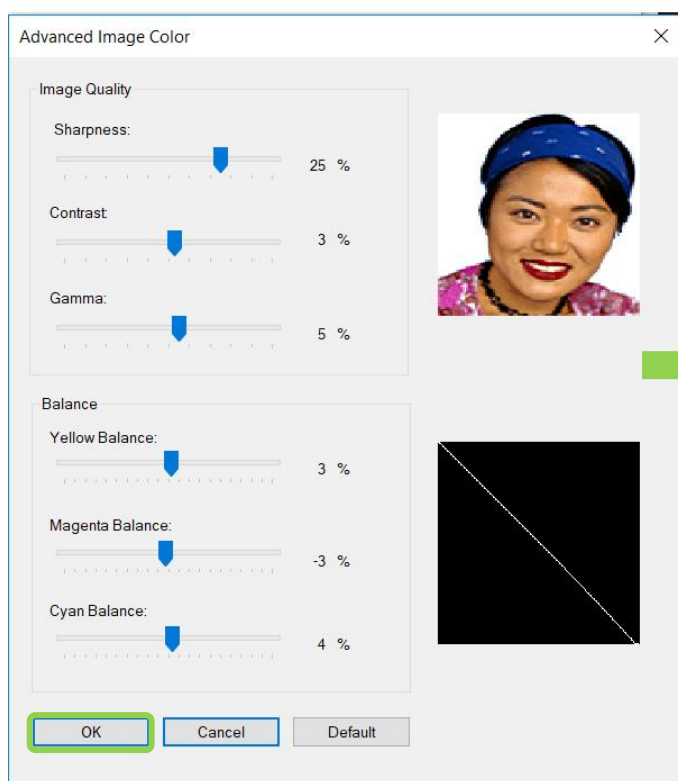
6. Go to “Image color” tab



Set the parameters as follow:

Dye-Sub intensity: 3%
Resin Heat Front: 2%
Resin Heat Back: 2%
Overlay Heat: 1%

- Click on “Advanced settings” button



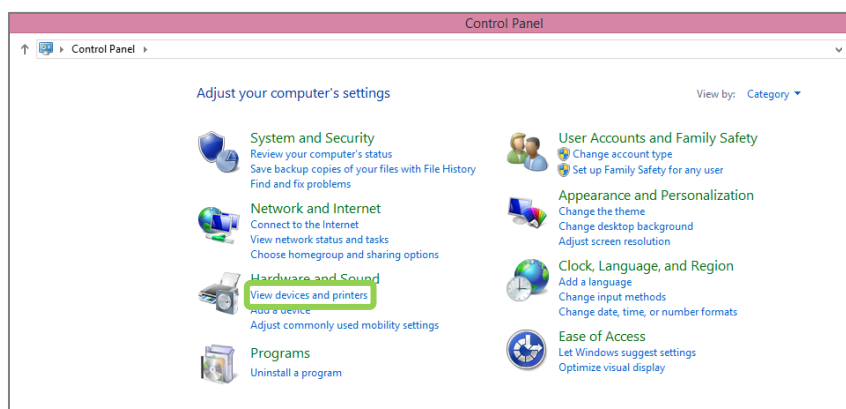
Set the parameters as follow:
Image quality
Sharpness: 25%
Contrast: 3%
Gamma: 5%

Balance
Yellow balance: 3%
Magenta balance: -3%
Cyan balance: 4%

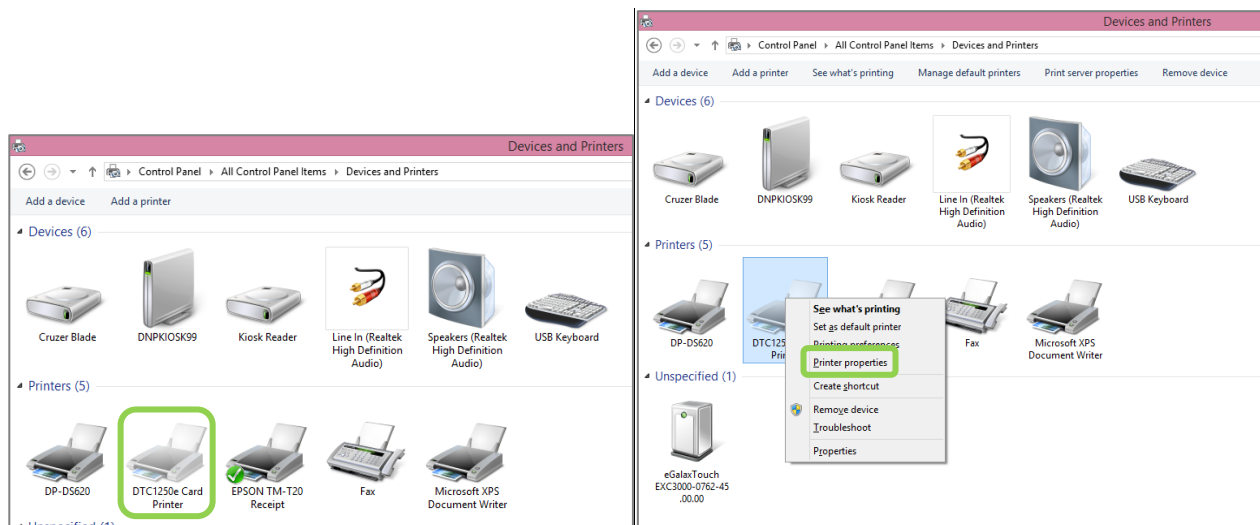
- Click on “OK” to save all your parameters.
- Once on your desktop, click on Snaplab + icon shortcut to launch the software.

WINDOWS 8 (FOR DS-TMINI)

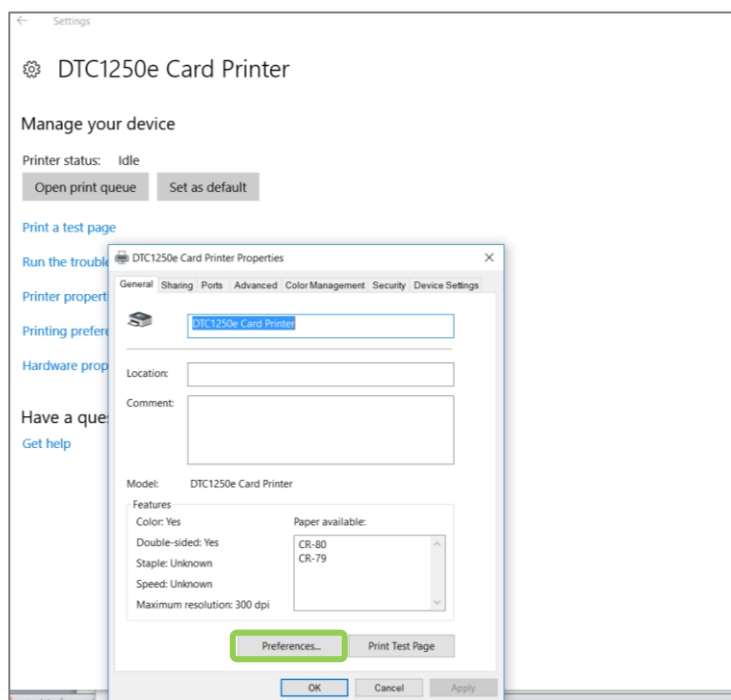
- Go to Control Panel and click on “View devices and printers” under “Hardware and Sound”



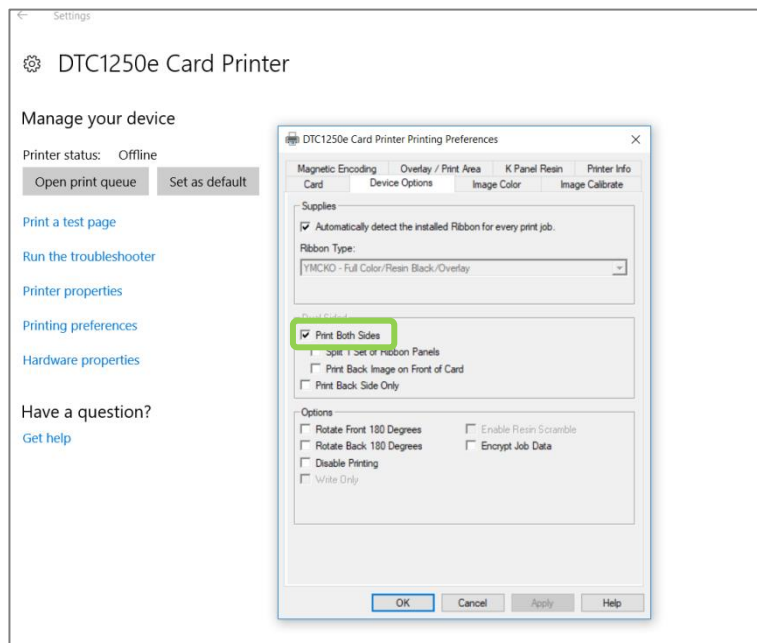
- Click right on DTC1250e Card Printer and select *“Printing properties”*



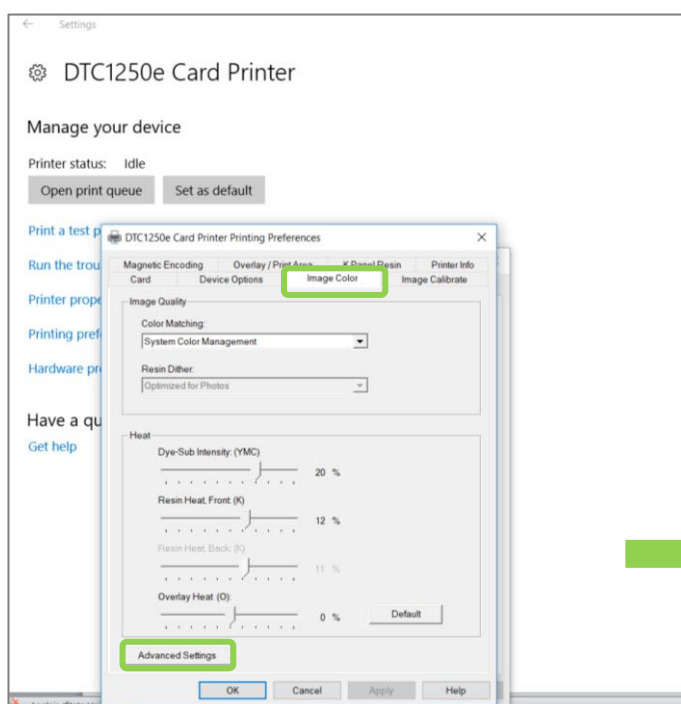
- Click on *“Preferences..”* button



4. Go to “Device Options” tab, and tick the “Print both sides” box
(Note: if a window pops up at this step, click on “OK”)



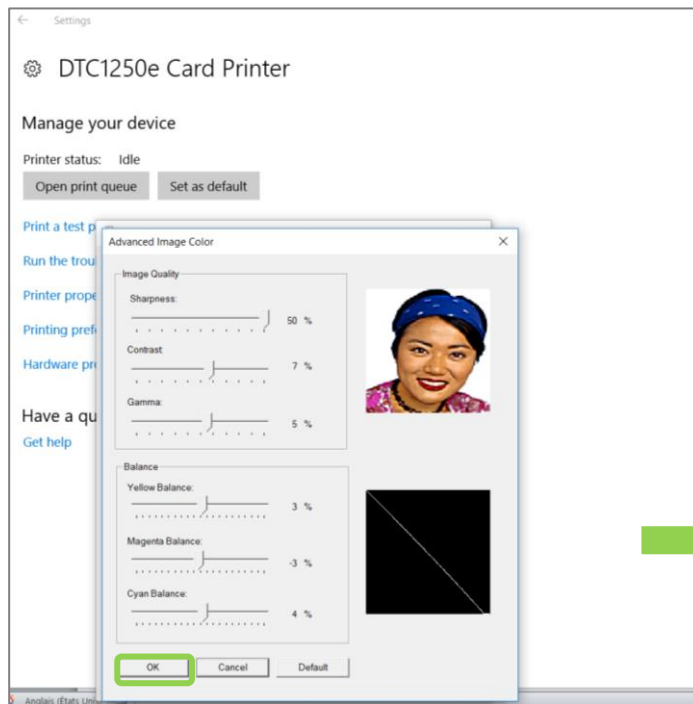
5. Go to “Image color” tab



Set the parameters as follow:

Dye-Sub intensity: 20%
Resin Heat Front: 12%
Resin Heat Back: 11%
Overlay Heat: 0%

6. Go to “Advanced settings” button



Set the parameters as follow:

Sharpness: 50%
Contrast: 7%
Gamma: 5%
Yellow balance: 3%
Magenta balance: -3%
Cyan balance: 4%

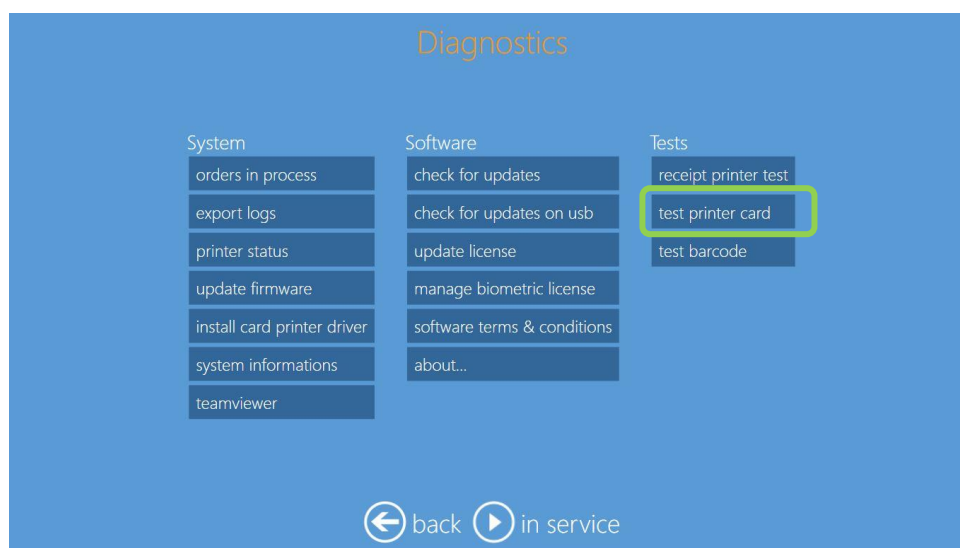
7. Click on “Ok” to save all your parameters.
8. Once on your desktop, click on DS-Tmini icon shortcut to launch the software.
9. The new photo card product will be available from Snaplab + main products menu.

WARNING: Please always use the same USB port on your DS-Tmini/DT-T6mini terminal to connect your Fargo printer. If you use a different USB port, a new Fargo printer will be generated in the Devices, and you will have to set again the advised parameters.

4.0 PHOTO CARD PRINT

Card Printer test

To access card printer test, enter Control panel select “Diagnostics”.
Select “test printer card”



If there is card printer installed, connected and powered on, a test card will be printed.
It is possible to select single side print test and dual side print test.

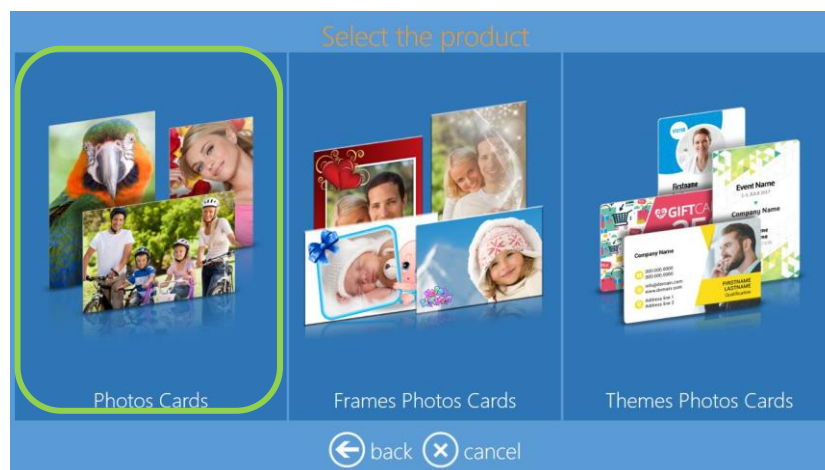


Photo card print workflow

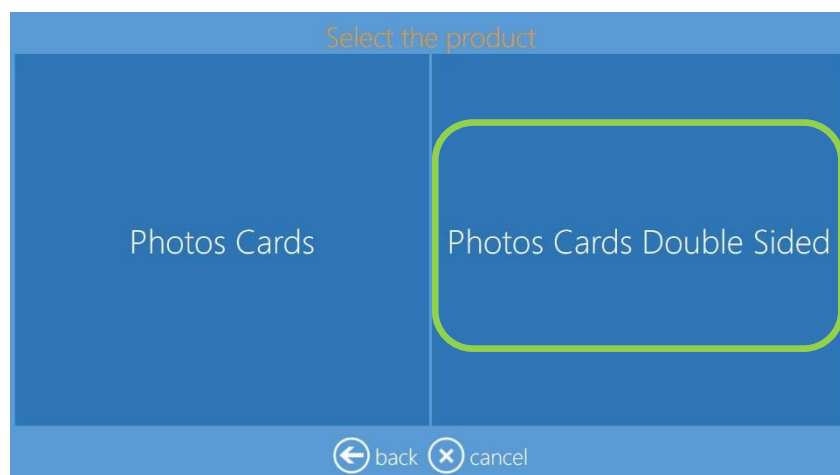
1) Select “Photo Cards”



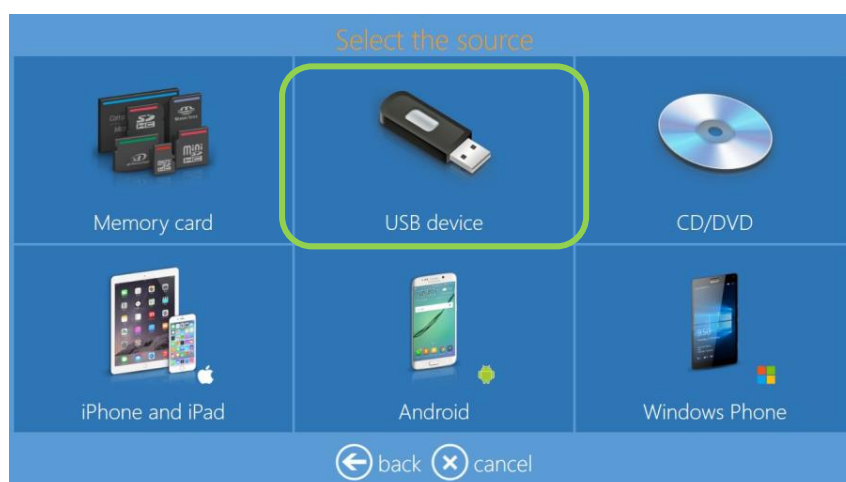
2) Select Photo Cards to print from your own graphics, Frames Photos Cards or Themes Photo Cards to print from supplied templates. In this example, the workflow for Photo Cards and then the workflow for Theme Photo Cards.



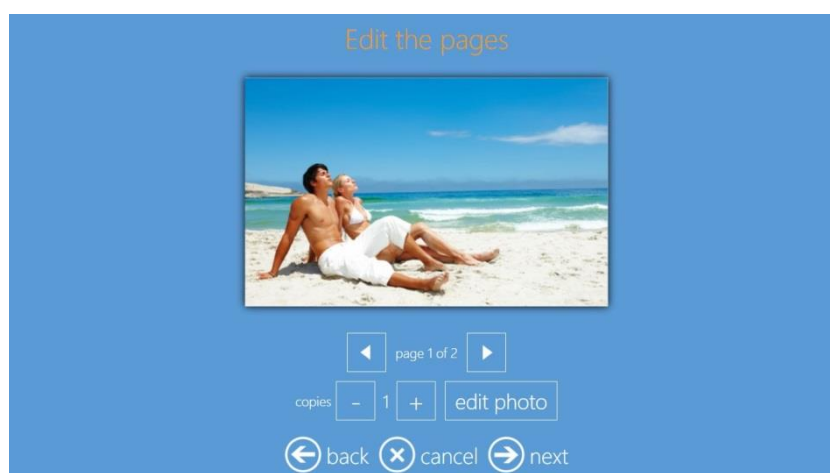
3) Select if single side printing or dual side printing. In this example dual side printing.



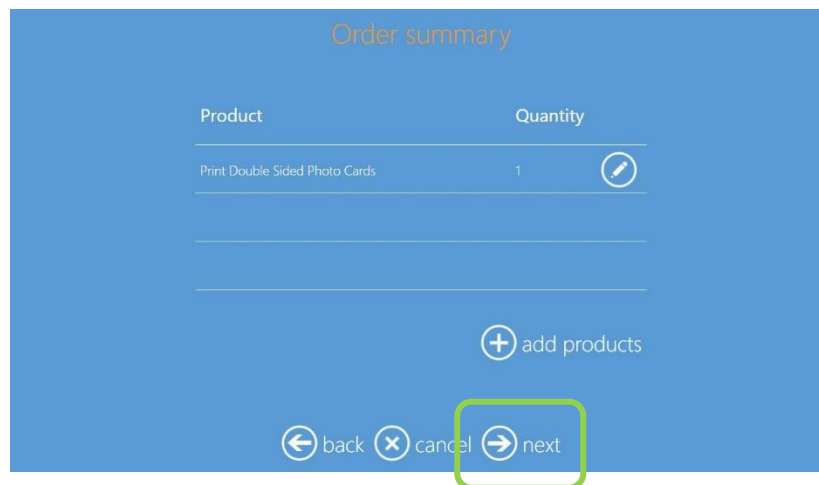
4) Load 2 images



5) Edit images

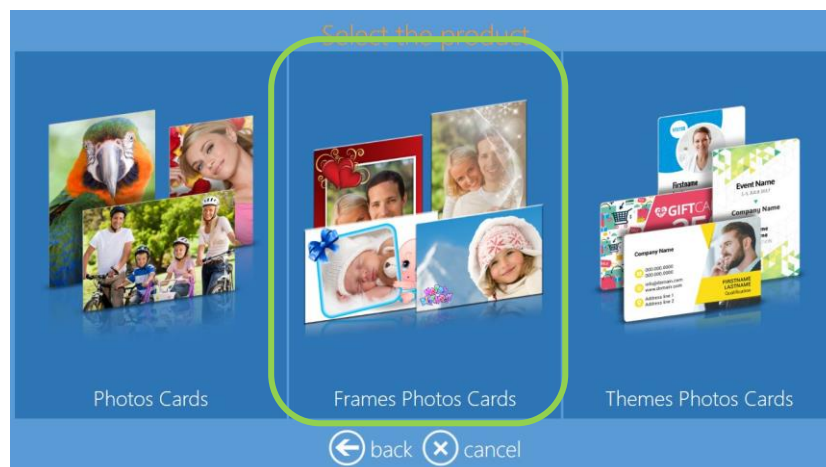


6) Select “next” and finish the order as for prints product

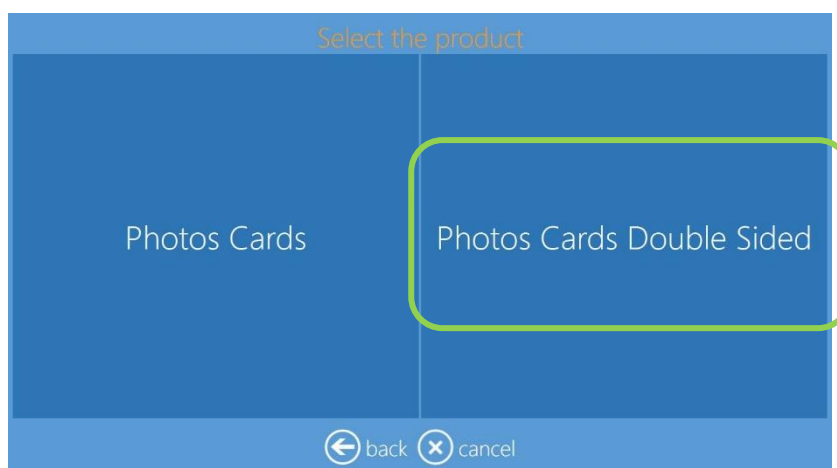


Frames Photo Cards print workflow

1) Select Frames Photo Cards



2) Select the type of Photo Card to be printed Single side or Double side.



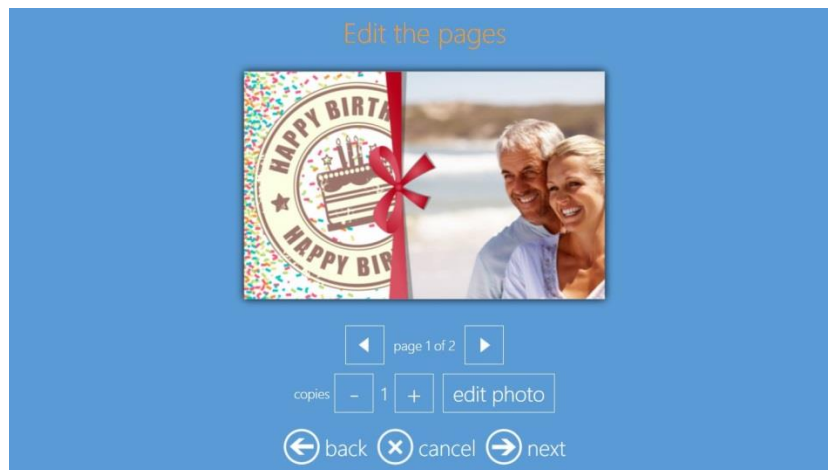
- 3) Select media where images are located, as an example a USB device with images. Load two images.



- 4) Select a graphic



- 5) Selecting next will bring to final preview screen. It is possible to edit each side of the card.



- 6) Select "next" and finish the order as for prints product.

Themes Photo Cards print workflow

1) Select Themes Photo Cards



2) Select the type of Photo Card to be printed, Horizontal or Vertical, Single side or Double side. Horizontal double side in this example



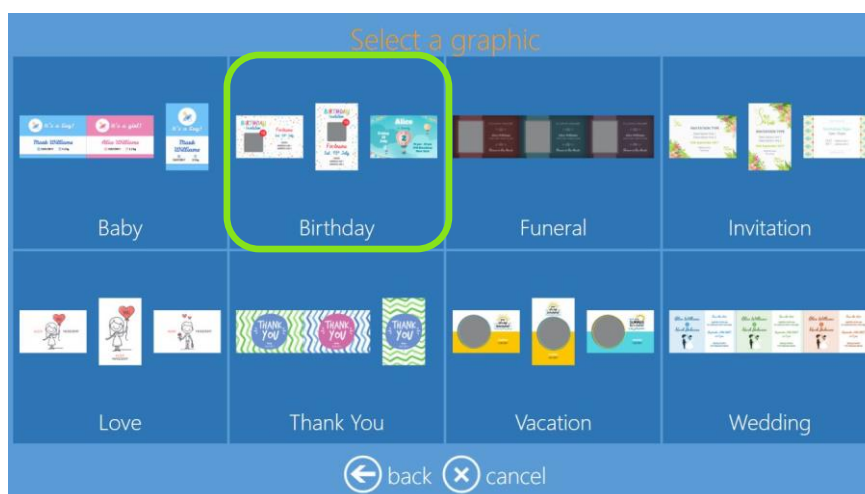
3) Select graphic category



- 7) Select media where images are located, as an example a USB device with images.



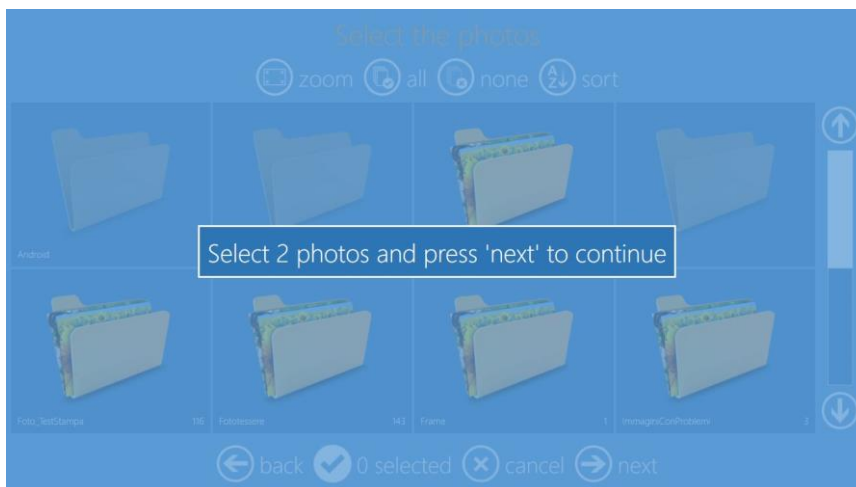
- 8) Select theme category. Birthday in this example.



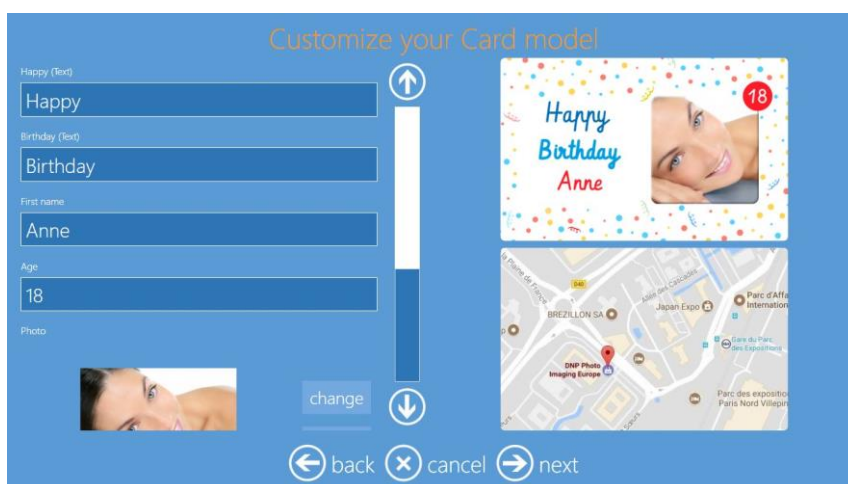
- 9) Select theme. Birthday with image in this example.



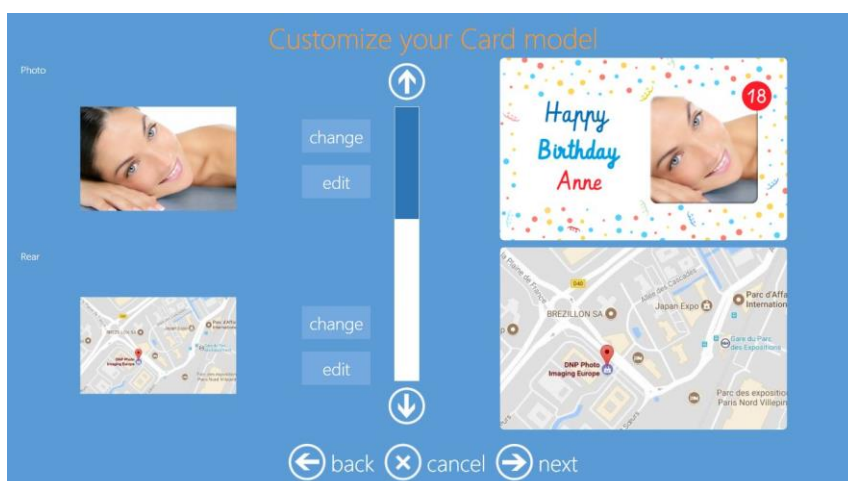
7) Select two images, one for front side and one for back side.



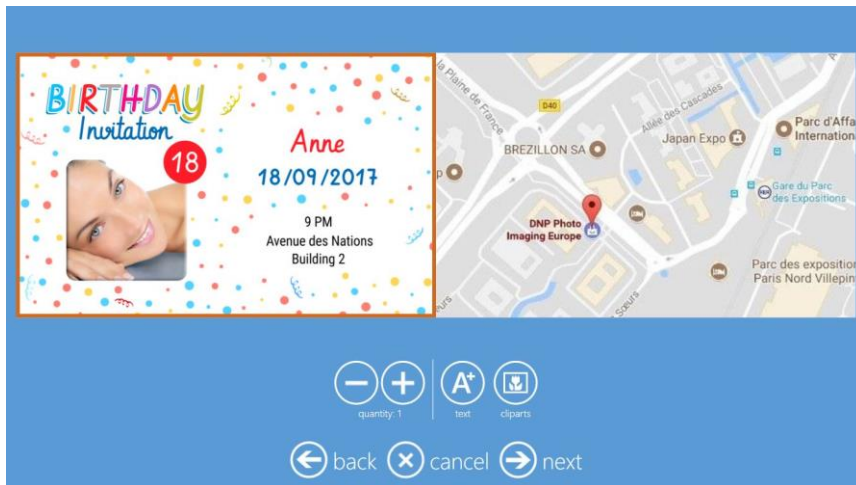
10) Enter data in the card fields on the left side. After each entry the card preview will be updated.



11) By scrolling the list on the left side it is possible to visualize all fields and to edit or change the loaded images.



12) Selecting next will bring to final preview screen. It is possible to add free position text and clipart.



13) Select “next” and finish the order as for prints product.

Adding Frame graphics to Photo Card product

Photo Editing Software is delivered with a number of frames already installed. Please use this option to add frames to the default frames.

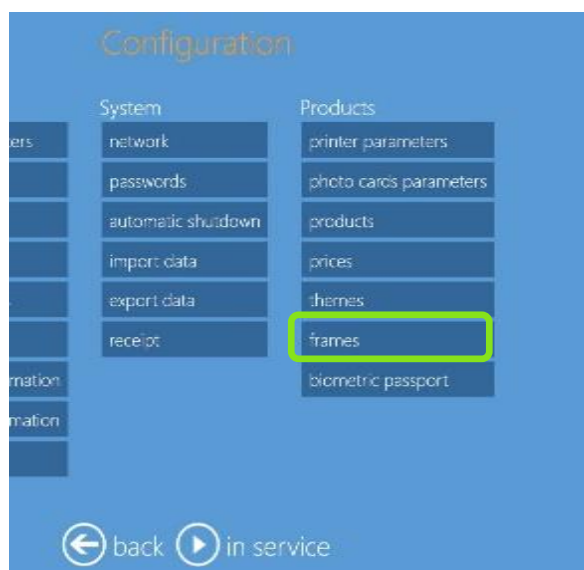
Frames used for cards are separate from Frames used for other print products.

Frames (for Frames Photo Cards product) allows user to enhance pictures with graphic elements like borders, logos, etc. The file with a frame must be:

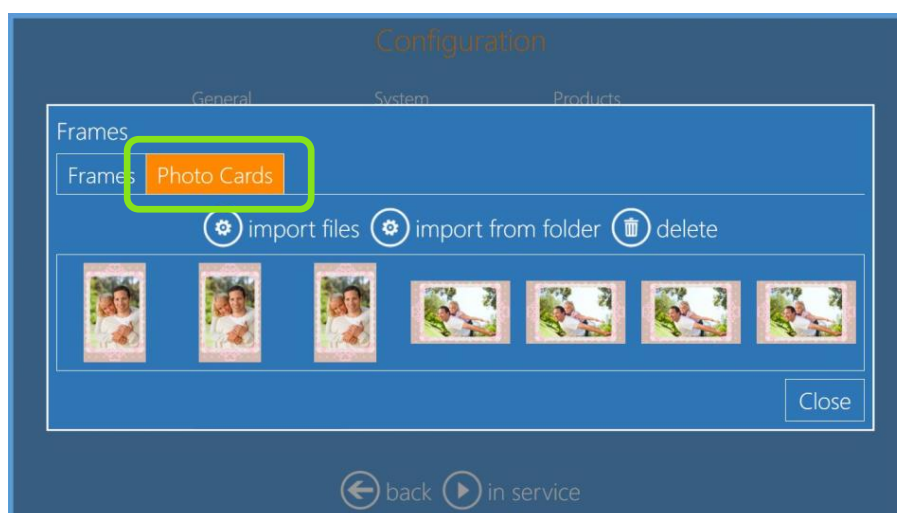
- .png with transparent area where the photo will be printed.
- Same size ratio as card format (86:54)
- Transparent area may have shade.
- PNG images stored in the computer.

Example of importing a frame (with a good aspect ratio) for 6x8 size print.

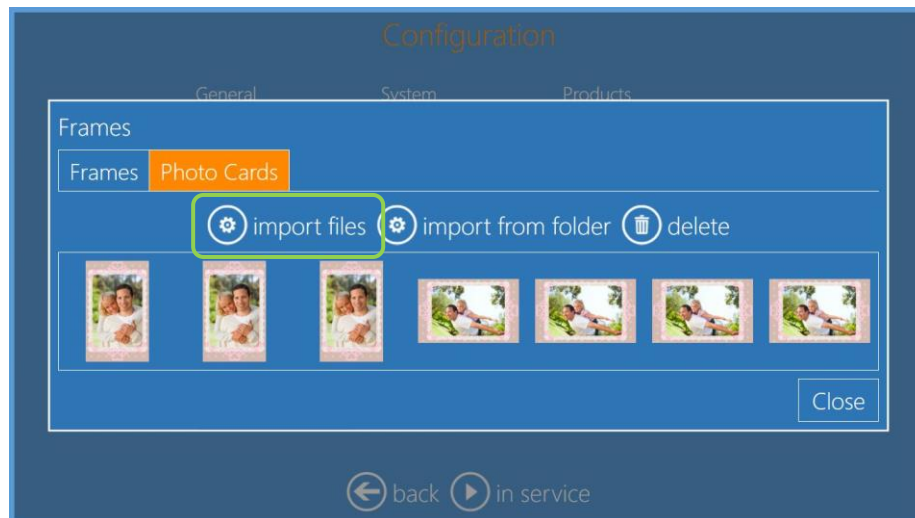
1) Click on frames.



2) Select "Photo Cards" tab



- 3) Click on import files



- 4) It will open system file browser to select the file(s) to be used as graphics for Frames Photo Cards.
- 5) Click "open" to import the file(s), click on "close" to close frames import window, close the program and restart the software.
- 6) New Frames are now available if you select "Frames Photo Cards" Product.

Adding theme graphics to Photo Card product

In addition to the graphics available with this software update, it is possible to import personalized graphics to be used within Photo Card product.

The Photo Card graphics will be stored separate from graphics for other products.

The file with graphics for Photo Cards must be a PhotoShop PSD file with layers and text arranged as described on next paragraph of this manual. **Please refer page 35 “PSD file structure for Photo Card product”**

The file name will be used as name for the graphic.

Example of adding a graphic “Baby - Boy” into the category “Events”, subcategory “Baby”

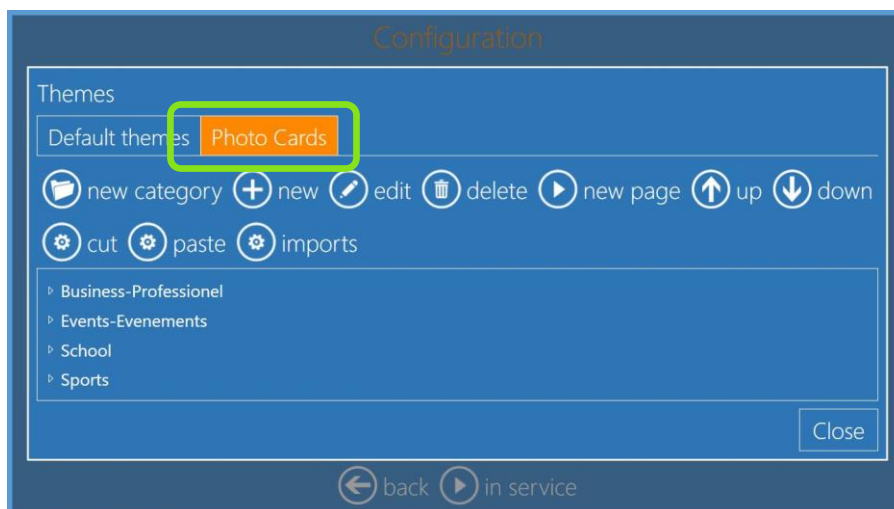
- 1) Enter into Main Panel by touching in sequence the lower left and right corners of the monitor.
- 2) Select “Settings”



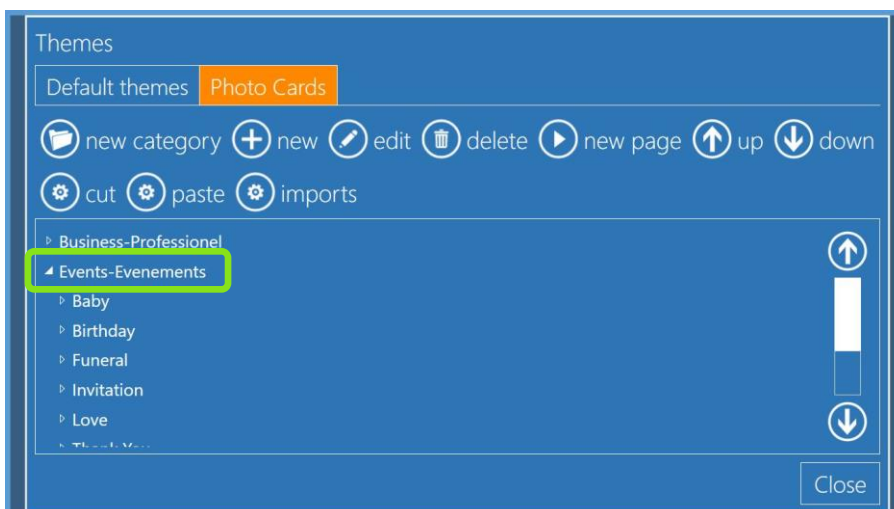
- 3) Select “Themes”



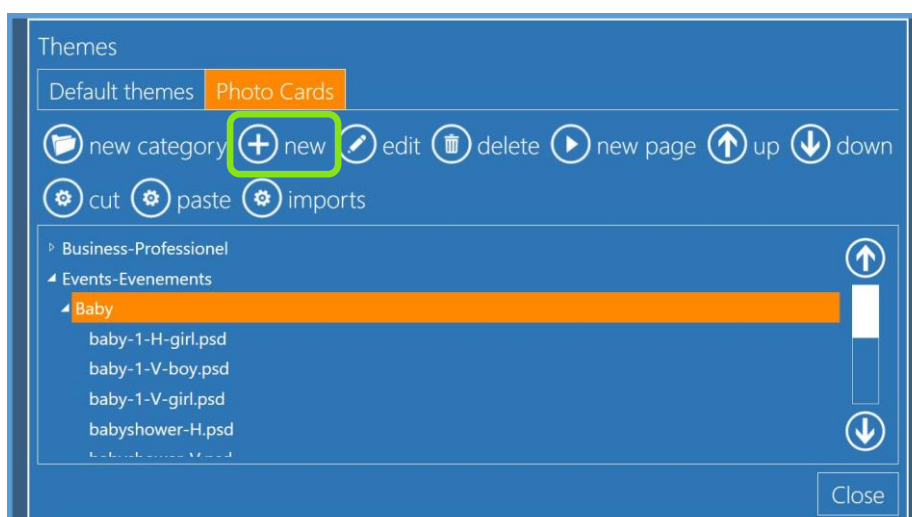
4) Select the Photo Cards tab



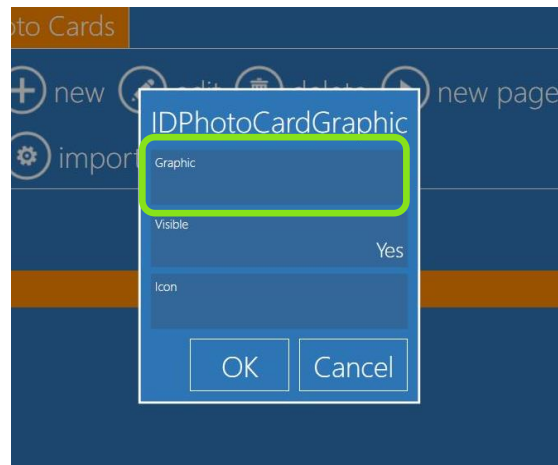
5) Expand the Events category by double clicking on it, double click on "Baby"



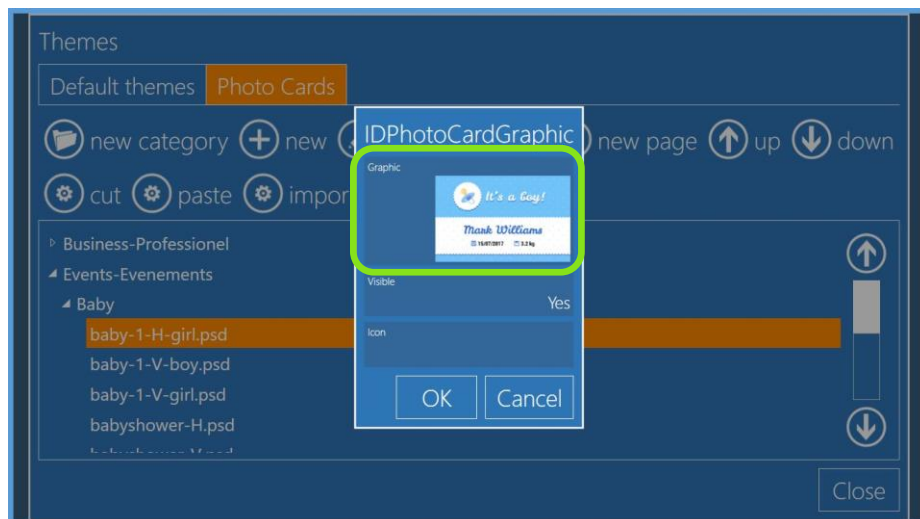
6) Double click on "Baby" to expand it and click on "new"



- 7) It will open a new window, select Graphic



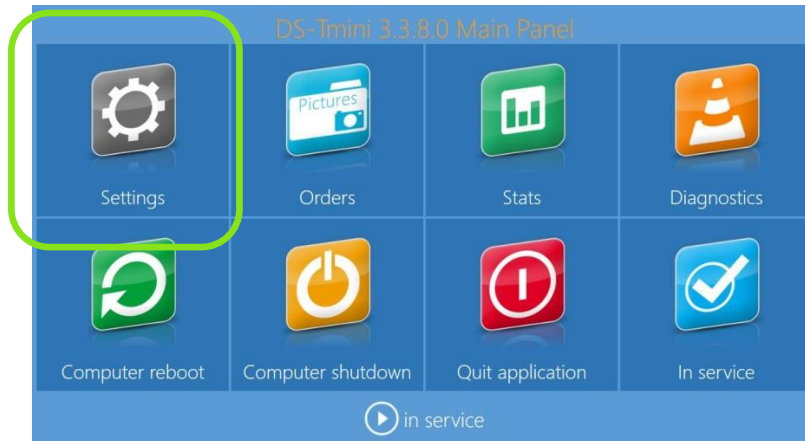
- 8) It will open file explorer window, browse for the PSD file and open it. The preview of the graphic will be visible in the Graphic area



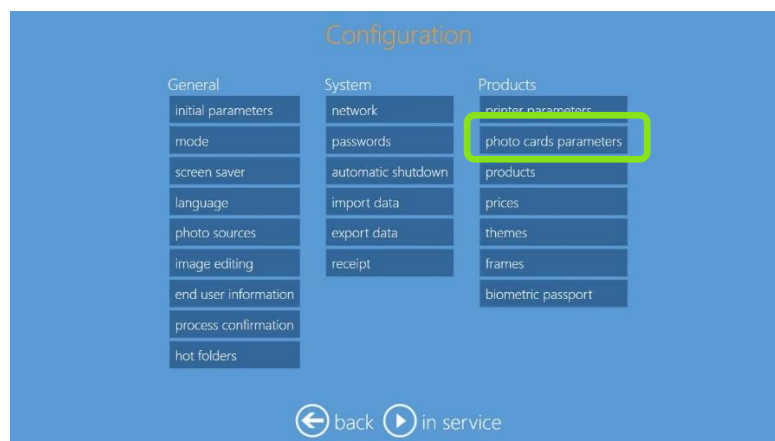
- 9) Click OK, close all windows and restart the software. The new graphic will be added to the Baby category.

Adding graphic for logo for Photo Card product

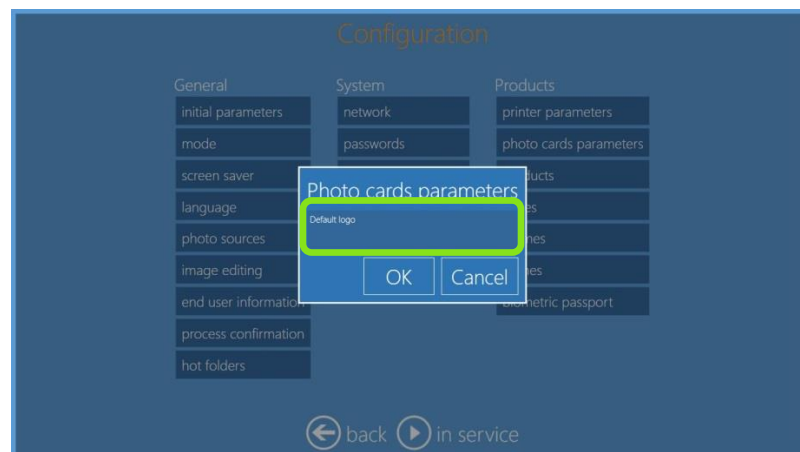
- 1) Enter into Main Panel by touching in sequence the lower left and right corners of the monitor.
- 2) Select "Settings"



- 3) Select "photo cards parameters"



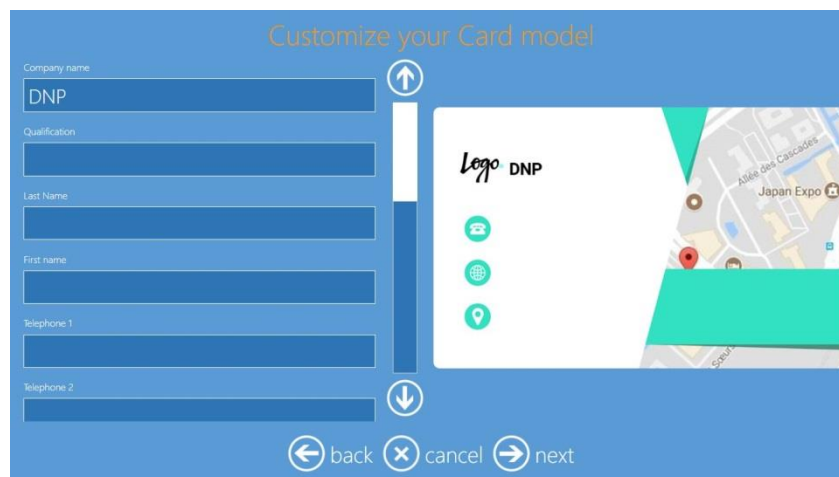
- 4) Click on "Default logo" and browse for the image logo



- 5) A preview of the logo will be visible into Photo cards parameters window



- 6) With this settings, when preparing a card with a logo area, the preset logo will be displayed. It will be possible to change the logo during the preview.



PSD file structure for Photo Card product

Layout and Naming Conventions

Build your Photoshop Design File with the following layers, in the order provided, using the names provided.

- 1) **Usertext_Name** OPTIONAL – You can have multiple Usertext layers in your card design. Each Usertext layer allows customers to add their own text. Fill the Usertext field with name of the field. Usertext layers cannot extend into the trim line area. Use the filed name in the layer **Name** after “**Usertext_**”. As an example the layer named Usertext_Company Name will show the text “Company Name” as a place holder into the graphic preview.
Place holder text will not be printed.
If you create multiple Usertext layers, make sure all names are different.
- 2) **Overlay** REQUIRED – You can have only one Overlay layer in your card design. The Overlay layer is the artwork layer. Place your design into the Overlay layer. The photo opening in your Overlay layer must be transparent. If the design you import contains multiple layers, you must merge those layers into the single Overlay layer. The Overlay layer must bleed into the trim line area.
- 3) **Userphoto10** OPTIONAL – You can have only one Userphoto layer in your design. The Userphoto layer allows customers to supply a photo. The Photo Editing software resizes the photo to fit the dimensions you set in the Userphoto layer. Fill the Userphoto field with 60% solid grey. The layer must use the name Userphoto10.
- 4) **Background** REQUIRED – You create an initial Background layer when you create the new file in Photoshop. The Background layer must be white. If you want to provide color in your design, provide it within the Overlay layer.
- 5) **Specialphoto_Logo** OPTIONAL – You can have one Logo layer in your design. If the Specialphoto_Logo layer is present, the default logo image will be used for the card. It will be possible to select or change the logo into card preview page. Fill the Specialphoto_Logo field with 60% solid grey.

4.0 TROUBLESHOOTING

DNP PIE Support team contact details

For any technical issue(s) and/or question(s), please contact DNP PIE support team at:

support@dnpphoto.eu

Local immediate print product is no longer available

If you are using DNP printers, the software automatically hides the products which can not be processed. Make sure the printer is powered on, with available media, connected to the DSTmini/DT-T6mini and ready to print.