

## **READ ME FIRST**

### **DNP Printers Drivers Compatibility with Windows 10**

#### **Overview:**

This document details the adaptability of the following printer drivers with Windows 10:

- **DS40 Printer Driver for Windows 8 - V3.2.1.0**
- **DS80 Printer Driver for Windows 8 - V3.1.1.0**
- **DS-RX1 Printer Driver for Windows 8 - V1.1.1.0**
- **DP-DS620 and DP-DS620(A) Printers Driver for Windows 8 - V1.0.1.0**

These printers with the dedicated drivers for Windows 8 work well on Windows 10, except the following two restrictions.

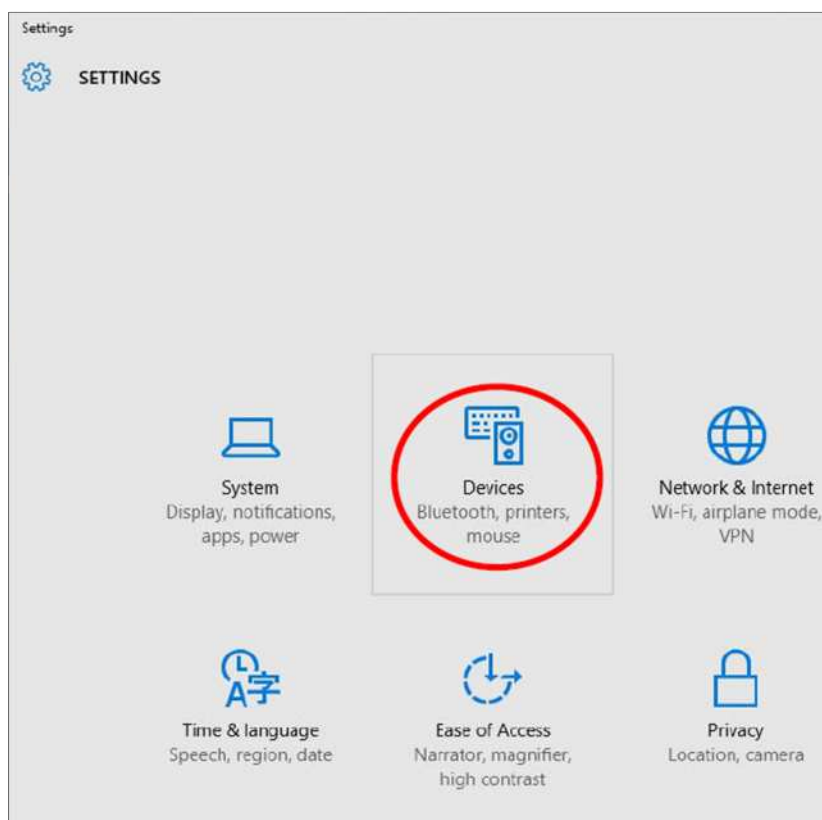
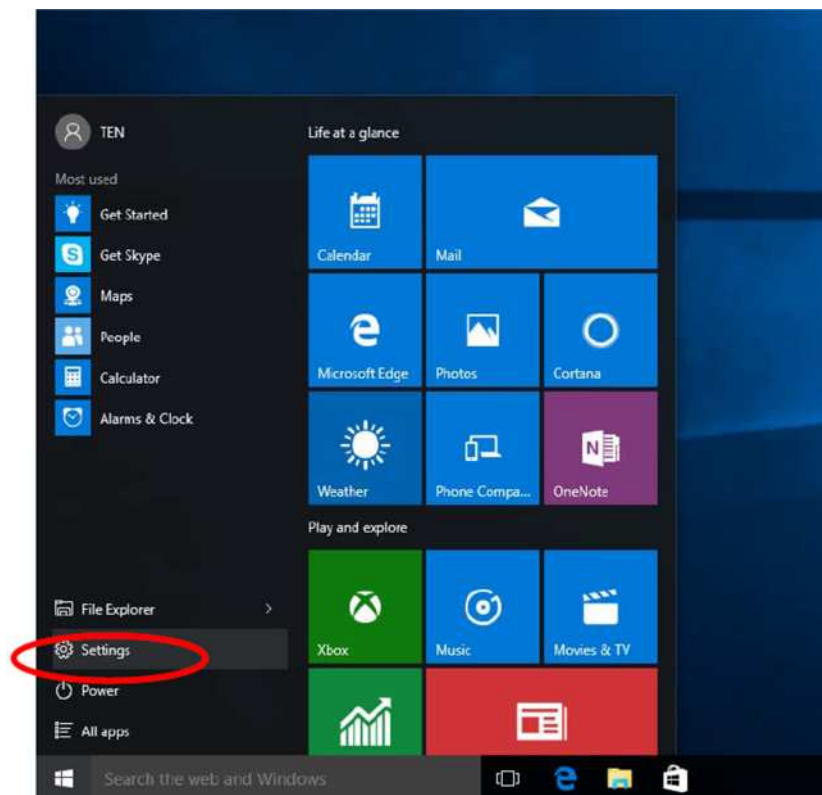
#### **Restrictions:**

##### **ICM function is unavailable in default driver settings for all printer models**

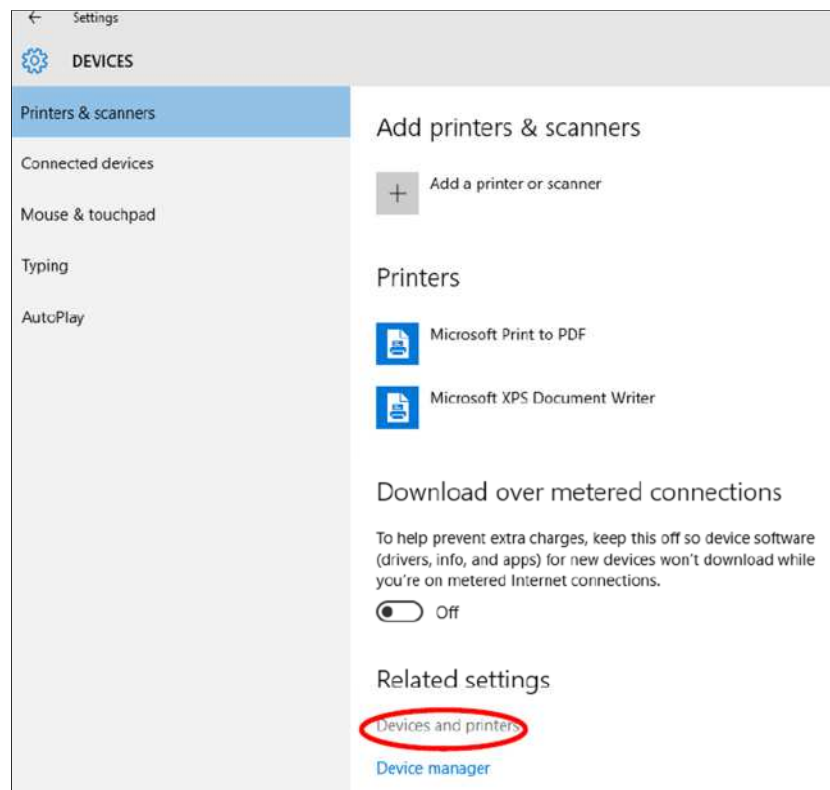
ICM function needs to be changed to “available” on driver setting screen.  
To proceed, please see the “Procedure of ICM setting” detailed below.

## Procedure of ICM setting

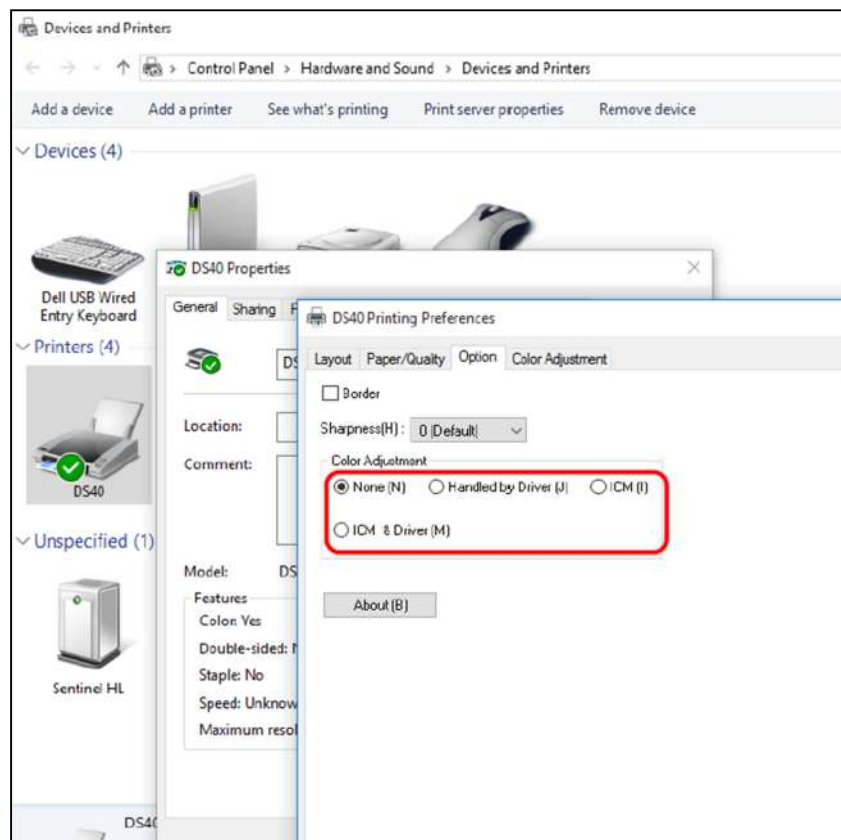
1) Click "Start" ⇒ "Setting" ⇒ "Devices"



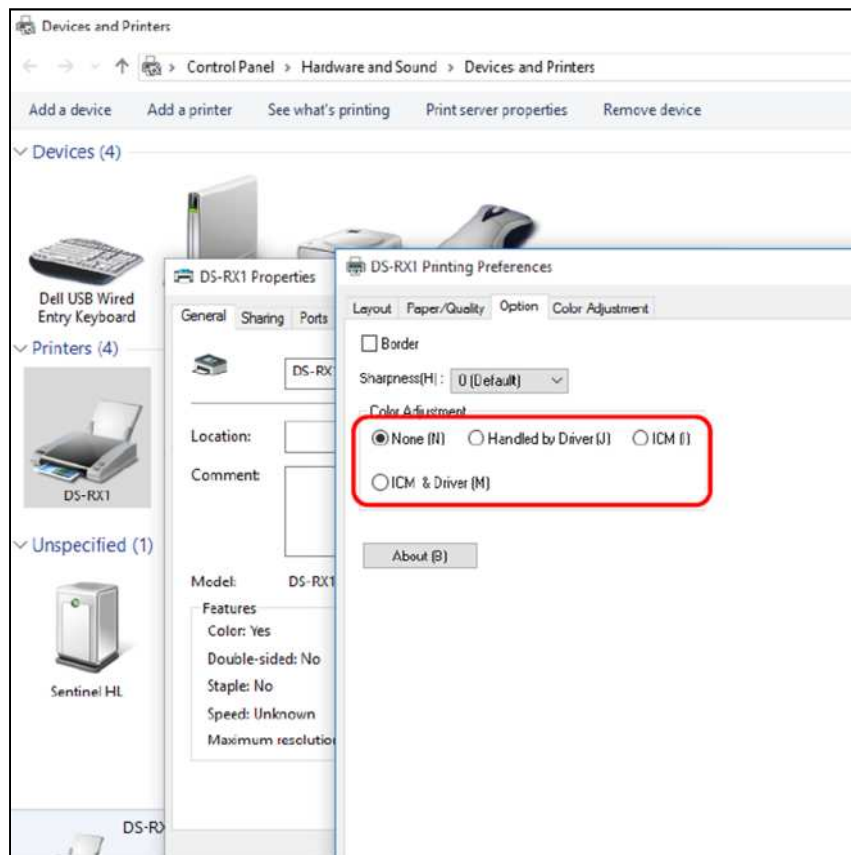
2) Click “Device and printers”



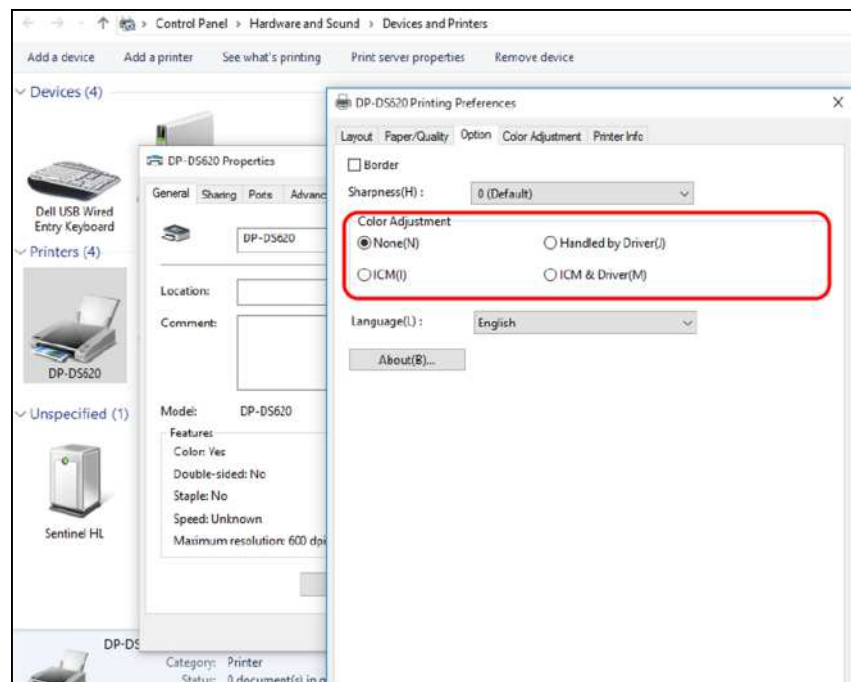
DS40: Change color adjustment in tab “Option” from “None” to “ICM”



DS-RX1: Change color adjustment in tab “Option” from “None” to “ICM”



DP-DS620: Change color adjustment in tab “Option” from “None” to “ICM”



If you have further questions using your DNP printer and its driver, please contact  
DNP PIE Technical Support at [support@dnpphoto.eu](mailto:support@dnpphoto.eu)